



KONICA MINOLTA

Partial Output

SERVICE MANUAL

bizhub PRESS

C7000/C7000P/ C6000

Date: 2010/08/24

KONICA MINOLTA BUSINESS TECHNOLOGIES, INC.

Table of Contents

E	SERVICE TOOL	E -1
1.	bizhub PRESS C7000/C7000P/C6000	E -1
1.8	Management Tool	E -1
1.8.1	Outline	E -1
1.8.2	Installation of Management Tool	E -3
1.8.3	Starting up of Management Tool	E -4
1.8.4	Technician mode	E -7
1.8.5	Administrator mode	E -34
1.8.6	Various setting for the software	E -40
1.8.7	Error message list	E -47

E SERVICE TOOL

1. bizhub PRESS C7000/C7000P/C6000

1.8 Management Tool

1.8.1 Outline

"Management Tool" is a software to read and reset the parts counter information of the unit.

(1) Operating environment

The following shows the hardware requirements of the Management Tool.

Applicable OS	Windows 2000 Professional (Service Pack 4 or later versions) Windows XP Professional (Service Pack 3 or later versions) Windows Vista (32bit) Home Premium/Business/Enterprise/Ultimate (Service Pack 2 or later versions) Windows 7 (32bit) Home Premium/Professional/Enterprise/Ultimate (Service Pack 1 or later versions)
CPU	Conform to OS recommended environment
Hard disk space	100MB or more
Memory space	Conform to OS recommended environment
Web browser	Microsoft Internet Explorer Ver.6.0 (Service Pack 1 or later versions)
Library	Windows 2000 & Microsoft .NET Framework 2.0 Windows XP & Microsoft .NET Framework 2.0 (SP2) Windows Vista & Microsoft .NET Framework 2.0 (SP2) Windows 7 & Microsoft .NET Framework 2.0 (SP2)
Display	At resolution of 800 x 600 (SVGA) or more 16 bits color or more
Applicable machine	bizhub PRESS C8000 bizhub PRESS C7000 bizhub PRESS C6000

Note

- Compliant OS may be limited depending on the RFID tag reader/writer.

(2) RFID tag reader/writer

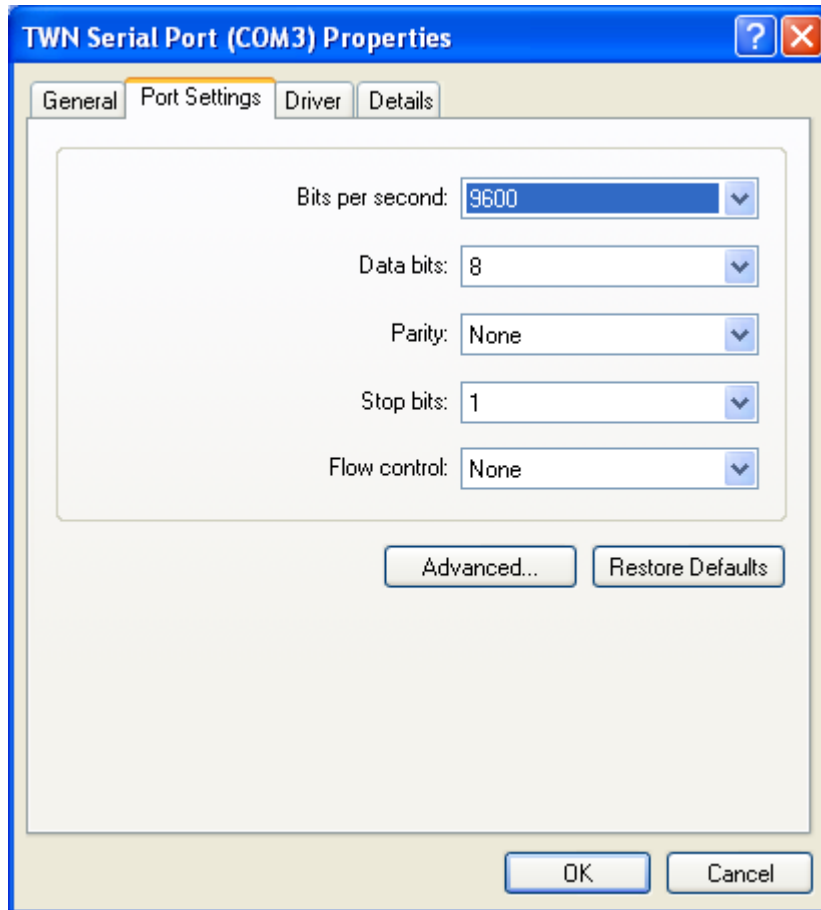
Management Tool uses the RFID tag reader/writer for reading and writing the PFID tag. The following shows the corresponding RFID tag reader/writer.

- "TMRF-1-U001" (Tamura Corporation)
- "TWN3" (Elatec Vertriebs GmbH)
Applicable mode USB
: Transparent Virtual COM Port
V24: Transparent Operation

Note

The driver for the RFID tag reader-writer needs to be installed to the computer beforehand.

- "TMRF-1-U001" (Tamura Corporation)
TmRfid USB driver (Windows 2000/XP)
Vista/7 dedicated USB driver(Windows Vista/7)
- "TWN3" (Elatec Vertriebs GmbH)
TWN Serial Port driver (Windows XP)
- The following shows the setting the port of the TWN Serial Port driver.



Item	Value
bit/sec	9600
Data bit	8
Parity	None
Stop bit	1
Flow control	None

(3) Main functions

The following shows the main functions of the Management Tool.

- Reading/writing RFID tag of unit (bizhub PRESS C8000)
The part information is read from the RFID tag of the unit and displayed on the screen. Select the part whose counter information is reset and write the reset information on the IC tag.
- Reading/writing data file of unit (bizhub PRESS C7000/6000)
Reads out the part information from the data file of the unit output from the device and displays it on the screen. Select a part whose counter information is reset on the screen, and write the reset information to the data file. (Support to read/write automatically from the USB memory.)
- Work log management
The counter information and the counter reset information caught from the replacement work are saved automatically as a log. On the work log display, the information can be sorted by the read or reset date and searched by the term such as the customer or the technician who executed the replacement. Therefore, the previous works can be checked.
- Output of work information with CSV file
Outputs the work information and work log when replacing in the CSV format file.
- Printing work information
Prints out the work information and work log when replacing.
- Association of the user information and the device
The user information can be associated with the device.
- Export/Import
The work log, user information, and technician information can be exported to the file. Also, the exported file can be imported.
- Serial number setting (bizhub PRESS C8000)
When replacing the tag due to the breakage, new RFID tag can be recognized to the machine.
- Intermediate transfer steering sensor information setting (bizhub PRESS C8000)
The initial value of the intermediate transfer steering sensor can be registered.
- Option
Set each setting of Management Tool.
- Log in mode
To use the Management Tool, login is required.
2 modes are provided for log in; "Administrator mode" and "Technician mode."
[Administrator mode]

Mode when log in as administrator.

[Technician mode]

Mode when log in as technician. The administrator registers the technician.

The operable function differs depending on the log in mode.

No.	Function name	Administrator mode	Technician mode
1	Replacement work	No	Yes
2	Work log	Yes	Yes
3	Register user	Yes	Yes
4	Register technician	Yes	No
5	SetPersonal	No	Yes
6	Administrator Setting	Yes	No
7	Unit Serial Number Setting	No	Yes
8	Intermediate transfer steering sensor information setting	No	Yes
9	Option	No	Yes
10	Version	Yes	Yes

Yes: operable, No: inoperable

1.8.2 Installation of Management Tool

(1) Installation method

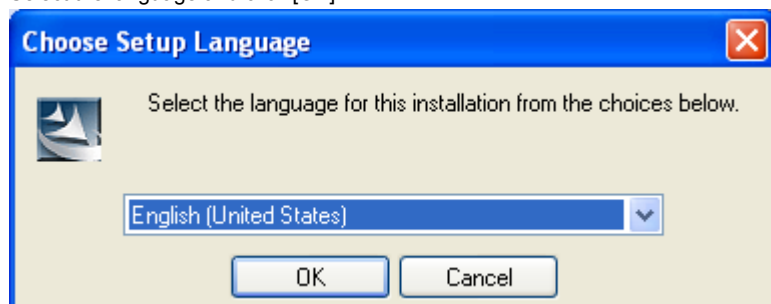
Install the Management Tool in the following steps.

Note

- Log on with the user name which has the Administrator authority to install.
- If any application is running on the computer (including anti-virus program), close it.
- Check that "Microsoft .NET Framework 2.0 (SP2)" has been installed on the computer before the installation.

Installation steps

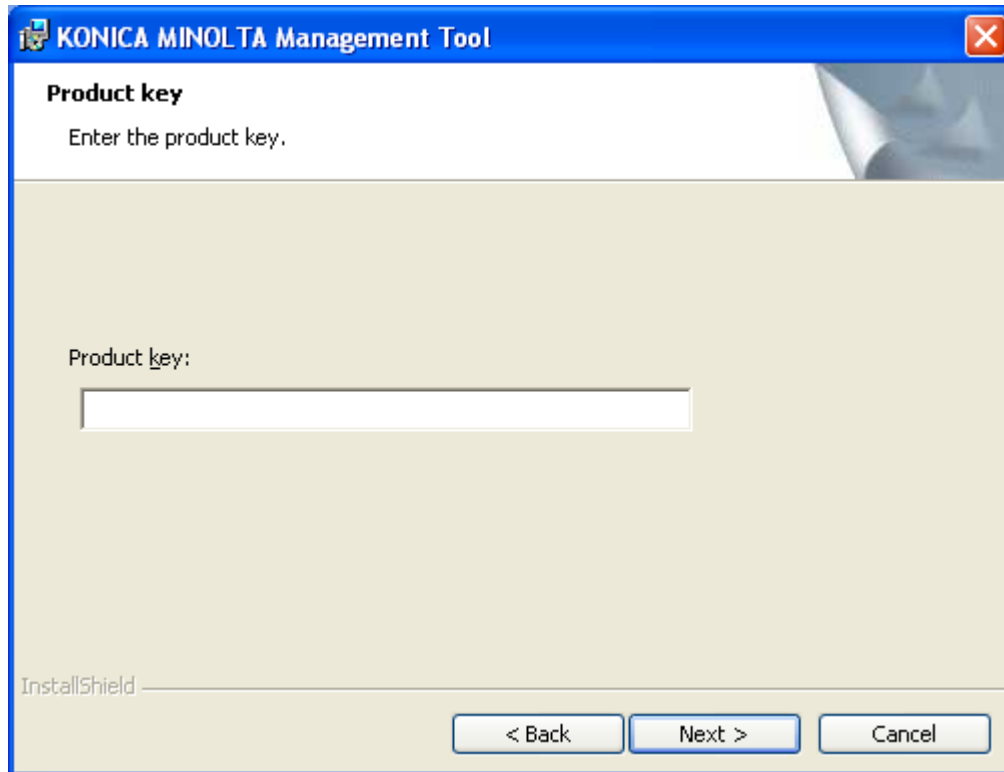
1. Double click the installation program "Setup.exe."
2. Select the language and click [OK].



3. Continue the installation following the instructions on screen.

Note

- **Product key input**
The Management Tool installer displays the screen to input the product key during installation.



The installation continues when the input product key is proper.

(2) Items to be installed

Once the Management Tool is installed, the following items are registered on the Start menu and the desk top.

Items to be registered for start menu

- Program
- Readme
- Manual

Items to be registered on desktop

- Shortcut of program

Note

- The "Readme" of the Start menu can be set not to be installed.
- Select "Custom" on the set up type and check the items to be installed.
- Whether to create the shortcut of the program registered on the desktop can be selected when installing.

(3) Uninstallation

There are following 2 ways to uninstall the Management Tool.

- Use "Add or Remove Programs" ("Add or Remove Programs" for Windows2000, "Programs and Features" for Windows Vista/7).
- Execute "Setup.exe" again.

Note

- The user information and the data information (Work log, User information, and Technician information) are saved in the following folder separately from Management Tool.

- 2000/XP:

C:\Documents and Settings\All Users\Application Data\KONICA MINOLTA\Management Tool\

- Vista/7:

C:\Users\Public\Documents\KONICA MINOLTA\Management Tool\

Since those information cannot be deleted by uninstalling, delete them manually.

When reinstalling it without deleting those information, the Management Tool can be started with the information before uninstallation.

- When uninstalling the Management Tool, all Management Tool programs need to be closed.

1.8.3 Starting up of Management Tool

(1) Start

There are following 2 ways to start the Management Tool.

- Start from the Start menu of Windows
Click Windows "Start" button - "All Programs" ("Programs" for Windows2000) - "KONICAMINOLTA" - "Management Tool" - "Management Tool."
- Start from the shortcut icon on the desktop
Double click "KONICA MINOLTA Management Tool" icon created on the desktop.

The login screen appears when it starts.

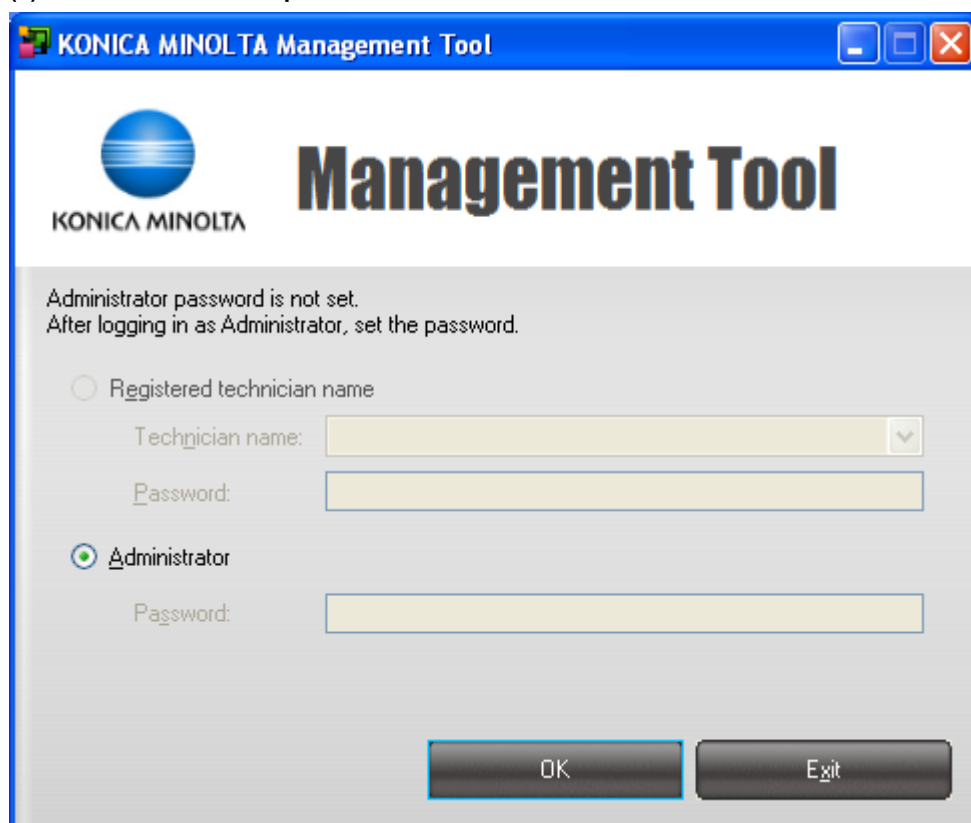
Note

- Whether to create the "KONICA MINOLTA Management Tool" icon or not can be selected when installing.

(2) The login screen

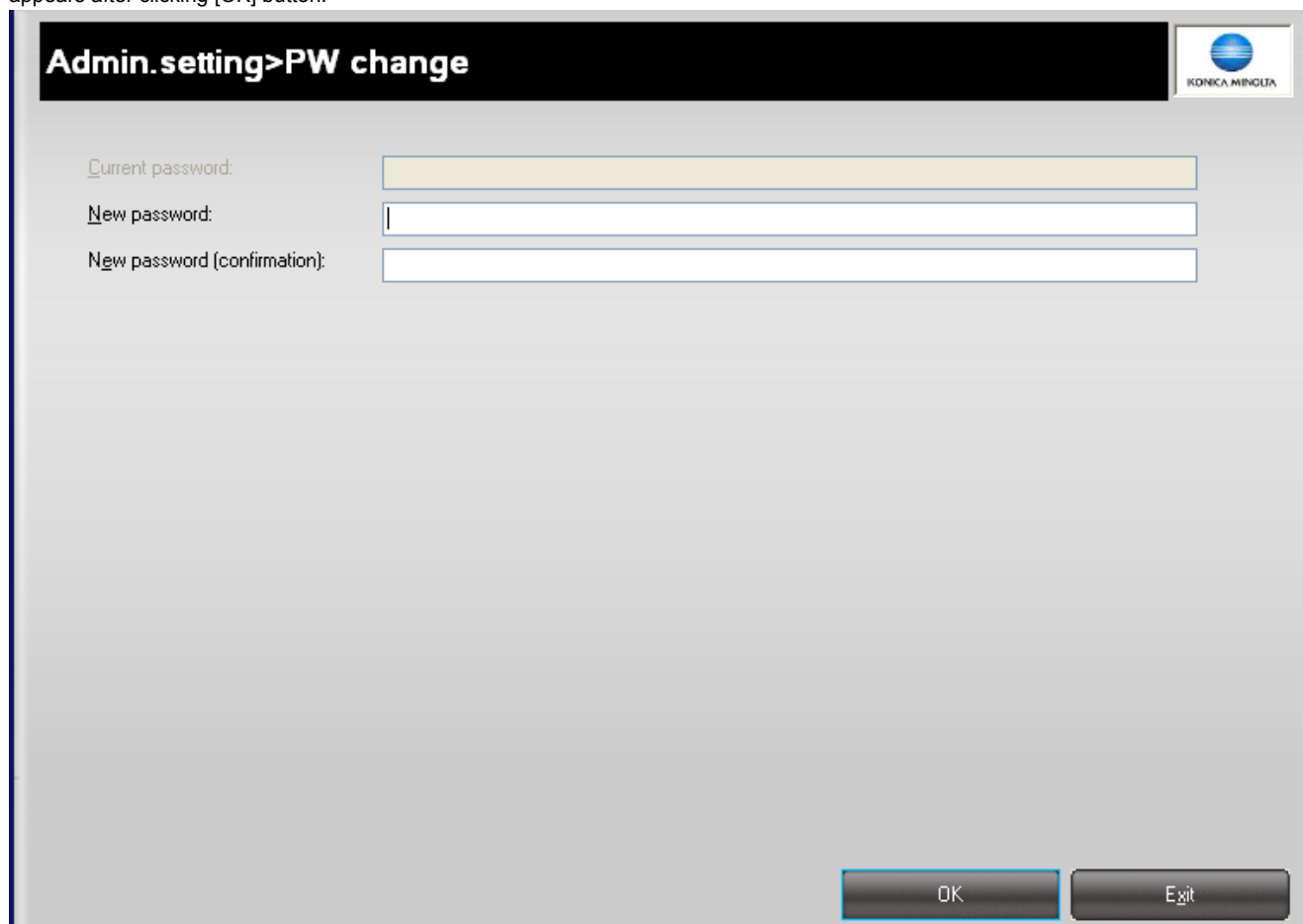
The login screen appears when the Management Tool starts. Select the login mode and enter the required information to log in.

(a) At 1st time of startup

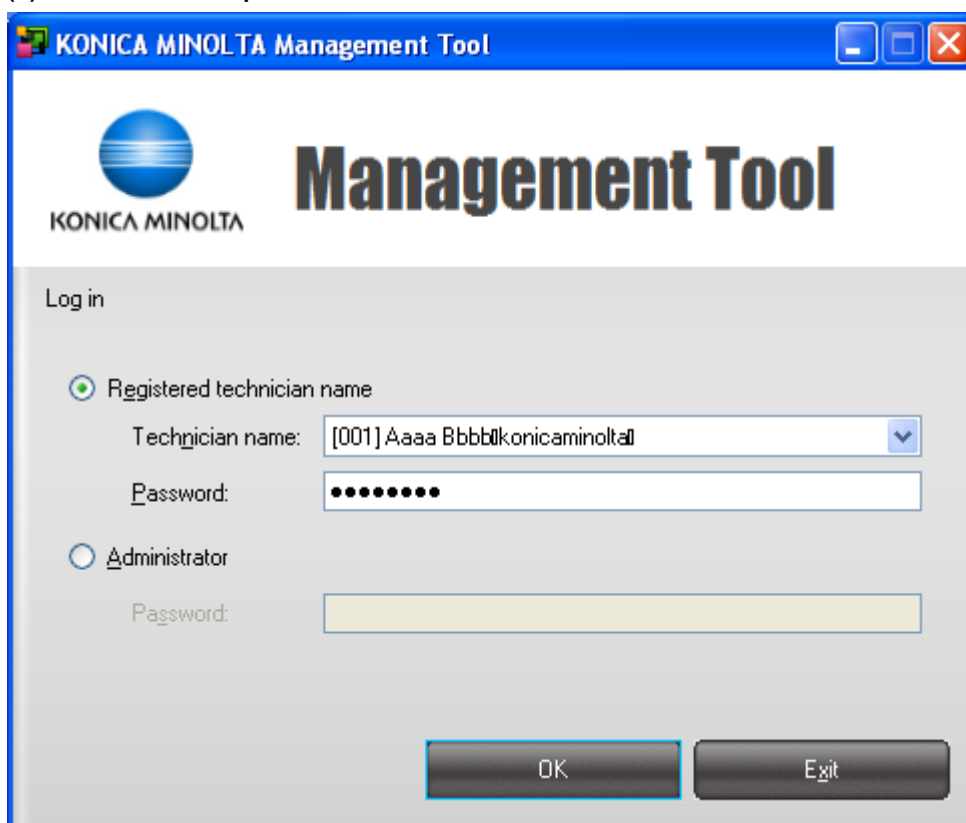


The screenshot shows the 'KONICA MINOLTA Management Tool' window. It features the company logo and the title 'Management Tool'. A message states: 'Administrator password is not set. After logging in as Administrator, set the password.' There are two login options: 'Registered technician name' (unselected) and 'Administrator' (selected). The 'Administrator' option has a password field. At the bottom, there are 'OK' and 'Exit' buttons.

The administrator password has not been set right after the installation. Set the administrator password when the password setting screen appears after clicking [OK] button.



The screenshot shows the 'Admin.setting>PW change' screen. It has a title bar with the text 'Admin.setting>PW change' and the Konica Minolta logo. The screen contains three password input fields: 'Current password:', 'New password:', and 'New password (confirmation):'. At the bottom, there are 'OK' and 'Exit' buttons.

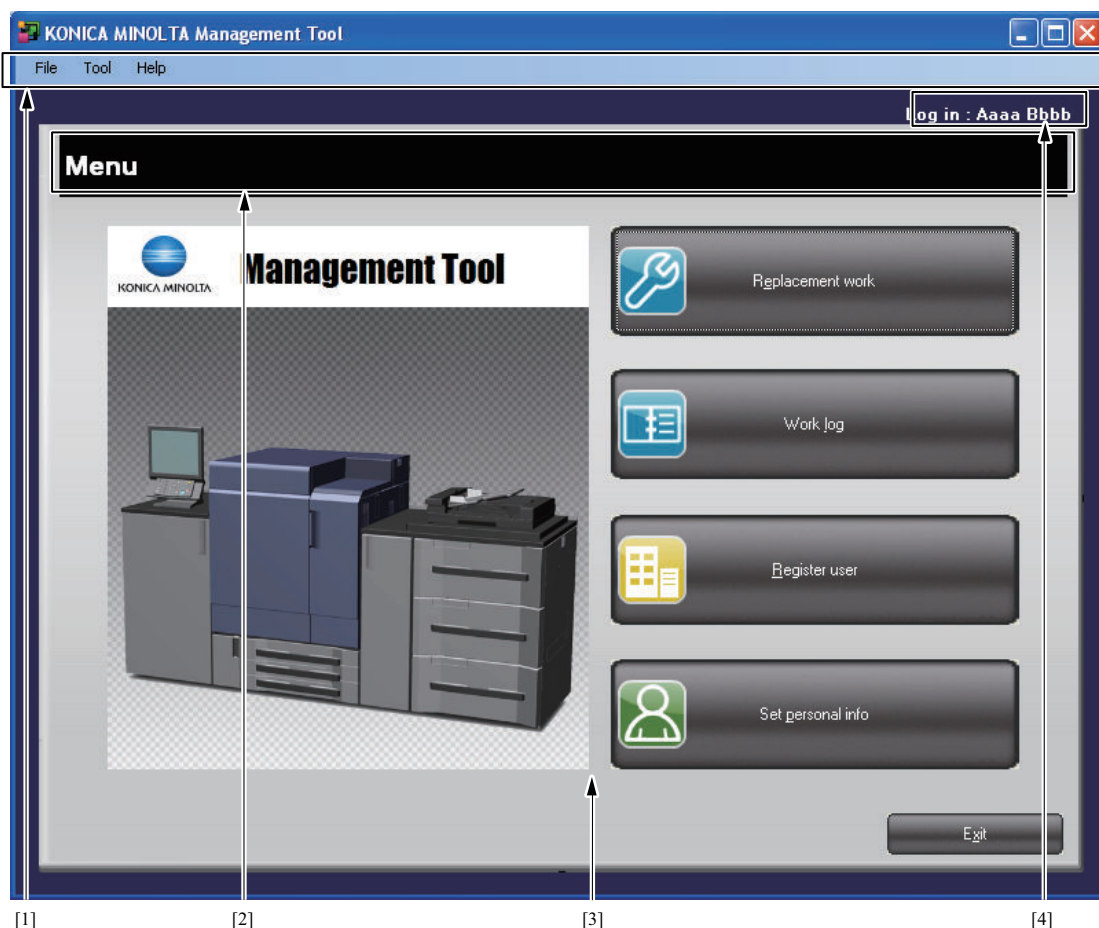
(b) At normal startup

For the replacement work, log in in the technician mode. Select [Registered technician name] and enter the required information to log in.

Note

- The image at the top of the screen can be customized. (Refer to [E.1.8.6.\(4\) Image setting](#))
 - When no technician has been registered, the registered technician name cannot be selected.
- For details of registering technician, [E.1.8.5.\(2\) Register technician](#).

(3) Operation screen



[1] Menu bar	[2] Navigation
[3] Operation area	[4] Login user

1. Menu bar
Specify each function of the Management Tool. (Refer to [E.1.8.6 Various setting for the software](#))
2. Navigation



[1] Path	[2] Image
----------	-----------

- Path
The transition of screens from the top screen is displayed as the path.
 - Image
The image can be customized. (Refer to: [E.1.8.6.\(4\) Image setting](#))
3. Login user
The current login user is displayed.
 4. Operation area
The operation panel based on the purpose is displayed.

(4) End

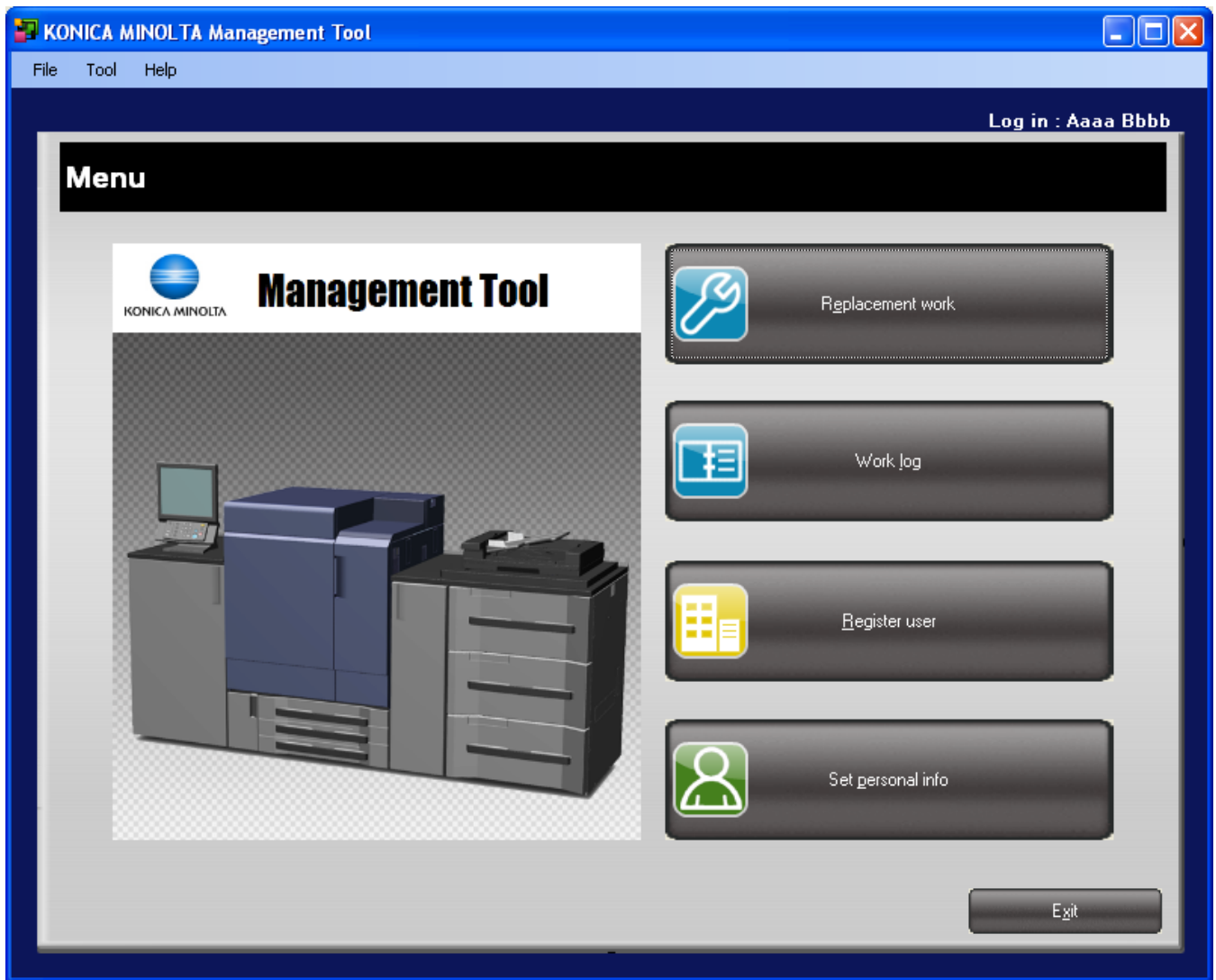
There are following 2 ways to exit the Management Tool.

- Click [Exit] button on the login screen or the top screen
- Select [Exit] from [File] menu
- Click [x] (close) button on the upper right corner of the screen
- Shut down or log off the computer

1.8.4 Technician mode

The operation procedures when logging in as an registered technician is described below.

To execute this mode, register the technician information in the administrator mode. (Refer to [E.1.8.5.\(2\) Register technician](#))

(1) Top screen

When logging in successfully, the top screen is displayed.

- To perform unit parts replacement, click "Replacement work" button. (Refer to [E.1.8.4.\(2\) Replacement work](#))
- To check the work log, click "WorkLog" button. (Refer to [E.1.8.4.\(3\) Work log](#))
- To register the customer information, click "RegisterUser" button. (Refer to [E.1.8.4.\(4\) Register user](#))
- To change the password or edit the memo, click "Set personal info" button. (Refer to [E.1.8.4.\(5\) SetPersonal](#))

Note

- The image at the left of the screen can be customized. (Refer to [E.1.8.6.\(4\) Image setting](#))

(2) Replacement work

Perform unit parts replacement.

(a) Type of replacement

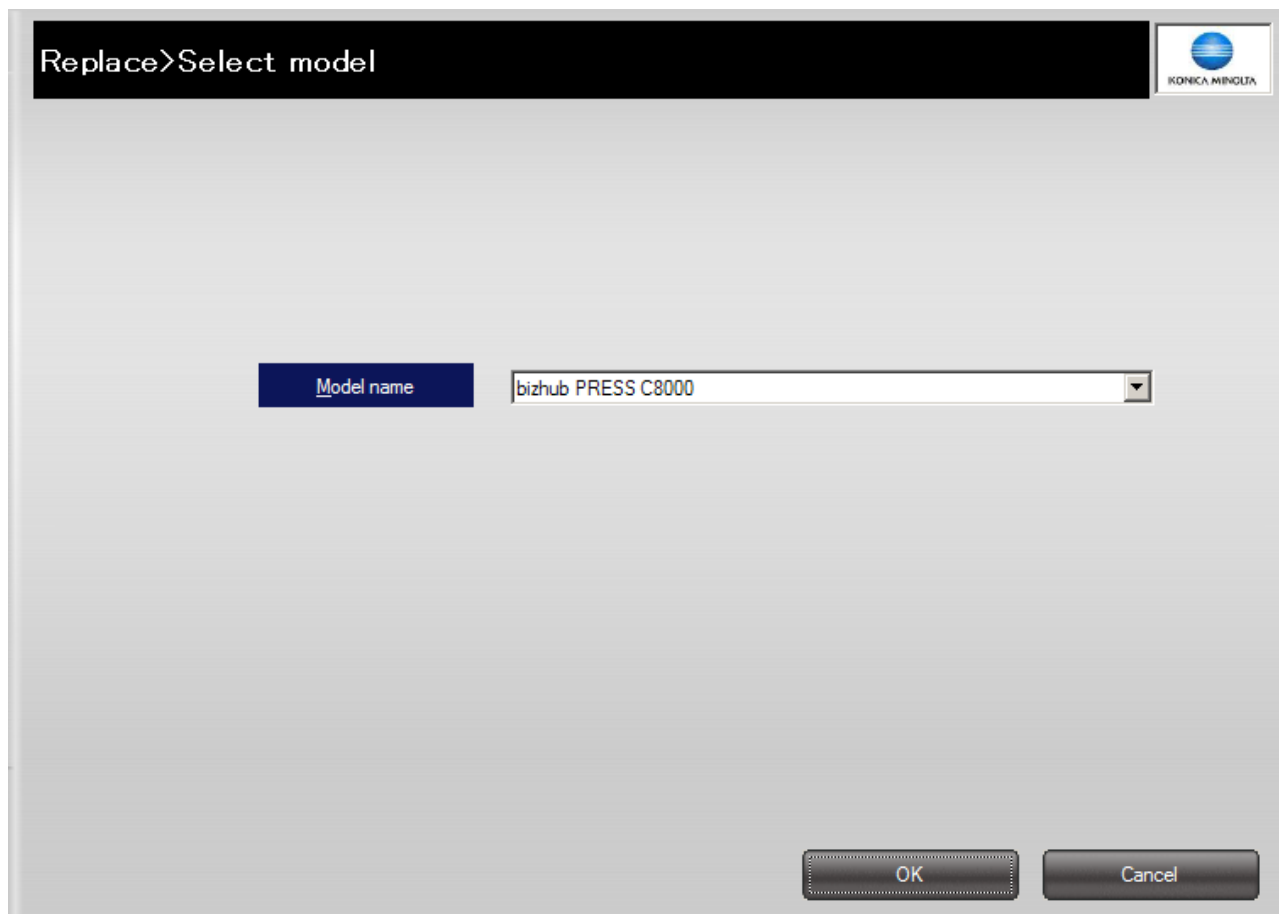
Depending on the machine type, the form and media of data differ.

Management Tool is applied to the following machines.

- bizhub PRESS C8000
- bizhub PRESS C7000/6000

(b) bizhub PRESS C8000 replacement procedure

1. Click "Replacement work" on the top screen.
Or select "Replacement work" in "Tool" menu.
When the RFID tag reader is not recognized, the process does not proceed to step 2. Check that the RFID tag reader is correctly connected.
2. A screen to select machine type appears.



Replace>Select model

Model name bizhub PRESS C8000

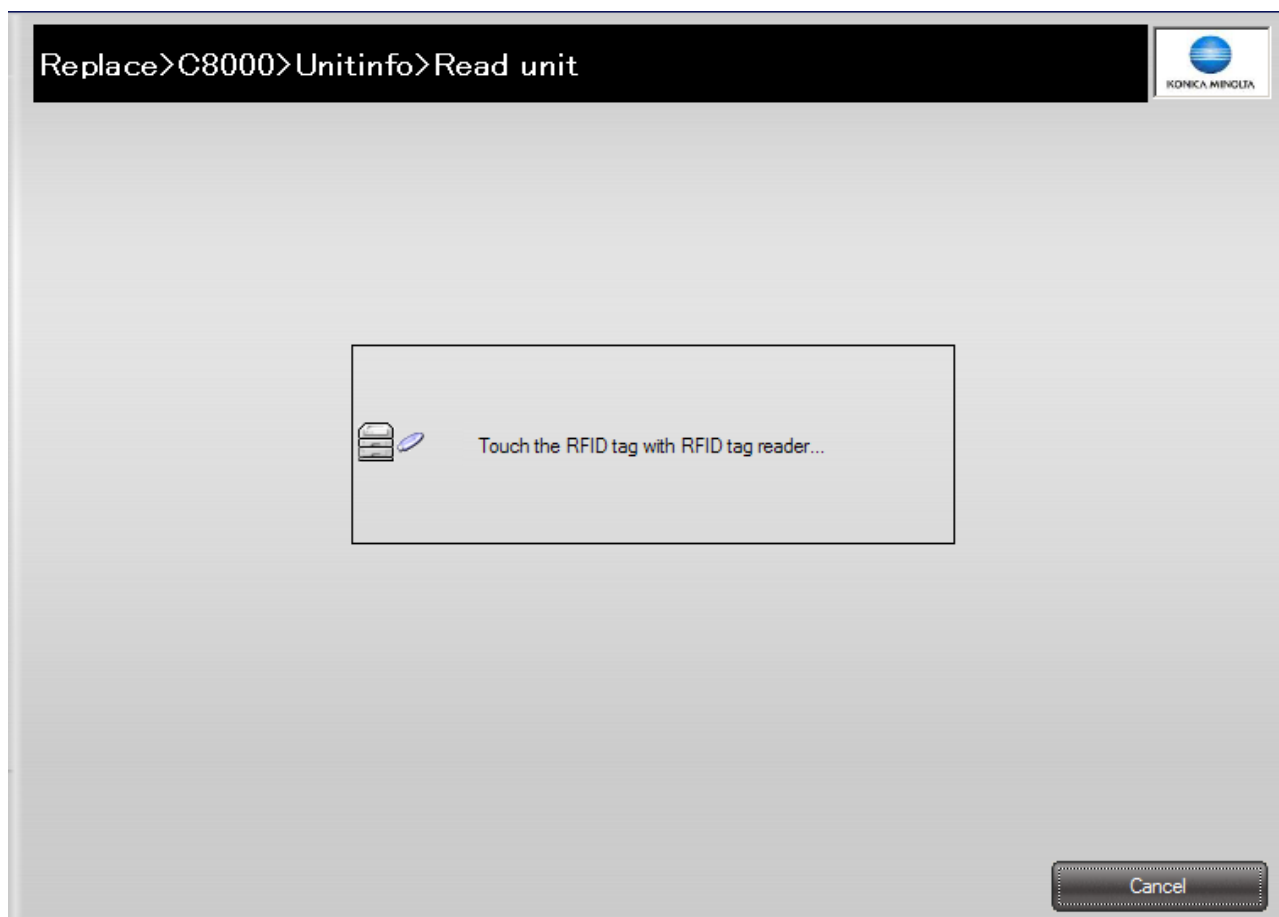
OK Cancel

Select "bizhub PRESS C8000" and click [OK] button.

Proceed to step 3.

When the RFID tag reader is not recognized, the process does not proceed to step 3. Check that the RFID tag reader is correctly connected.

3. When the unit read screen is displayed, touch the RFID tag with the RFID tag reader.



Replace>C8000>Unitinfo>Read unit

Touch the RFID tag with RFID tag reader...

Cancel

4. When read successfully, the unit information screen is displayed.
The units read are listed on the left of the screen as buttons.

Replace>C8000>Unitinfo

User name: [No User Setting] Change

Read another

Intermediate Transfer Unit(1)
S/N:A1RFA500L9999995

2nd Fusing Unit(2)
S/N:A1RJA72A29999992

Fusing Unit(3)
S/N:A1RFA72AF9999991

2nd Fusing Unit(4)
S/N:A1RJA72A29999998

Intermediate Transfer Unit

Serial number: A1RFA500L9999995

Name	Part No.	Qty	Count	Life cycle
<input type="checkbox"/> 1st Transfer Roller/C	A03U5012	1	156793	52%
<input type="checkbox"/> 1st Transfer Roller/K	A03U5012	1	156793	52%
<input type="checkbox"/> Transfer Roller Bearing	65AA2638	8	1319...	43%
<input type="checkbox"/> 1st Transfer Roller/Y	A03U5012	1	32562	10%
<input type="checkbox"/> 1st Transfer Roller/M	A03U5012	1	32562	10%
<input type="checkbox"/> Toner Recovery Sheet	65AA-293	1	15434	5%
<input type="checkbox"/> Belt Cleaning Blade	A1RF5106	1	15210	5%
<input type="checkbox"/> Transfer Belt Separation Cl...	65AA-287	3	32562	5%
<input type="checkbox"/> Intermediate Transfer Belt	A1RF5001	1	0	0%
<input type="checkbox"/> Transfer Belt Cleaning Unit	A1RF8506	1	1201	0%
<input type="checkbox"/> 2nd Transfer Roller/U	A1RF5004	1	2357	0%
<input type="checkbox"/> Transfer Belt Cleaning Seal...	A1RF5112	1	0	0%

Reset count Undo reset

Parts count Unit/machine Basic info End of work

5. Select the parts to reset the counted value from the unit information read.

Replace>C8000>Unitinfo

User name: [No User Setting] Change

Read another

Intermediate Transfer Unit(1)
S/N:A1RFA500L9999995

2nd Fusing Unit(2)
S/N:A1RJA72A29999992

Fusing Unit(3)
S/N:A1RFA72AF9999991

2nd Fusing Unit(4)
S/N:A1RJA72A29999998

Intermediate Transfer Unit

Serial number: A1RFA500L9999995

Name	Part No.	Qty	Count	Life cycle
<input checked="" type="checkbox"/> 1st Transfer Roller/C	A03U5012	1	156793	52%
<input checked="" type="checkbox"/> 1st Transfer Roller/K	A03U5012	1	156793	52%
<input checked="" type="checkbox"/> Transfer Roller Bearing	65AA2638	8	1319...	43%
<input checked="" type="checkbox"/> 1st Transfer Roller/Y	A03U5012	1	32562	10%
<input checked="" type="checkbox"/> 1st Transfer Roller/M	A03U5012	1	32562	10%
<input checked="" type="checkbox"/> Toner Recovery Sheet	65AA-293	1	15434	5%
<input checked="" type="checkbox"/> Belt Cleaning Blade	A1RF5106	1	15210	5%
<input checked="" type="checkbox"/> Transfer Belt Separation Cl...	65AA-287	3	32562	5%
<input type="checkbox"/> Intermediate Transfer Belt	A1RF5001	1	0	0%
<input type="checkbox"/> Transfer Belt Cleaning Unit	A1RF8506	1	1201	0%
<input type="checkbox"/> 2nd Transfer Roller/U	A1RF5004	1	2357	0%
<input type="checkbox"/> Transfer Belt Cleaning Seal...	A1RF5112	1	0	0%

Reset count Undo reset

Parts count Unit/machine Basic info End of work

Note

- When selecting the intermediate transfer belt of the intermediate transfer unit, the intermediate transfer belt information screen is displayed.
Be sure to input the reflectance value which is written on the belt.

Intermediate transfer belt information

Enter intermediate transfer belt information.

Front: 2500 (2000-3500)

Rear: 3000 (2000-3500)



OK Cancel

6. Click "Reset count".
When the count reset screen is displayed, contact the RFID tag with the RFID tag reader.

Replace>C8000>ResetCount

Unit type: Intermediate Transfer Unit

Serial number: A1RFA500L0000048



 Touch the RFID tag with RFID tag reader...

Cancel

7. When count reset is done successfully, the unit information screen is updated.

Replace>C8000>Unitinfo

Read another

User name: (No User Setting)

Change

Intermediate Transfer Unit(1)
S/N:A1RFA500L0000048

Fusing Unit(2)
S/N:A1RFA72AF9999991

2nd Fusing Unit(3)
S/N:A1RJA72A29999998

2nd Transfer Unit(4)
S/N:A1RFA520P9999993

Intermediate Transfer Unit

Serial number: A1RFA500L0000048

	Name	Part No.	Q'ty	Count	Life cycle
<input type="checkbox"/>	Intermediate Transfer Belt	A1RF5001	1	0	0%
<input type="checkbox"/>	Transfer Belt Cleaning Unit	A1RFB506	1	0	0%
<input type="checkbox"/>	Toner Recovery Sheet	65AA-293	1	0	0%
<input type="checkbox"/>	1st Transfer Roller/M	A03U5012	1	0	0%
<input type="checkbox"/>	1st Transfer Roller/C	A03U5012	1	0	0%
<input type="checkbox"/>	Transfer Belt Cleaning Seal...	A1RF5116	1	0	0%
<input checked="" type="checkbox"/>	Belt Cleaning Blade	A1RF5106	1	0	0%
<input checked="" type="checkbox"/>	1st Transfer Roller/Y	A03U5012	1	0	0%
<input checked="" type="checkbox"/>	1st Transfer Roller/K	A03U5012	1	0	0%
<input checked="" type="checkbox"/>	2nd Transfer Roller/U	A1RF5004	1	0	0%
<input checked="" type="checkbox"/>	Transfer Belt Separation Cl...	65AA-287	3	0	0%
<input checked="" type="checkbox"/>	Transfer Roller Bearing	65AA2638	8	0	0%

Reset count

Undo reset

CSV export...

Print...

Parts count

Unit/machine

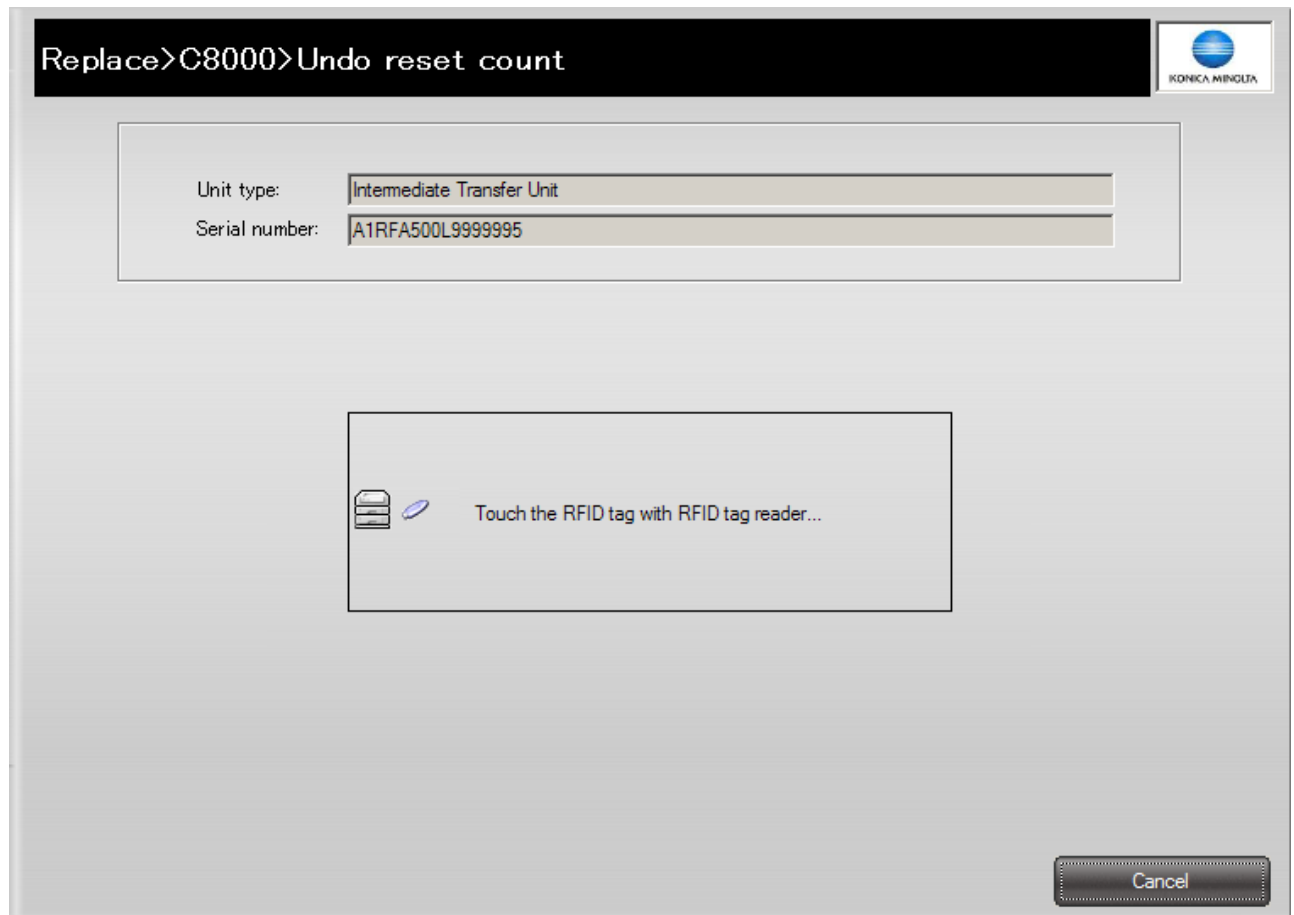
Basic info

End of work

8. When canceling the count reset, Click "Undo reset count."

E-11

When the canceling count reset screen is displayed, touch the RFID tag with the RFID tag reader. The count information returns to the condition when it was read.



9. To read information of another unit, click "Read another."
→ Return to [step 3](#).

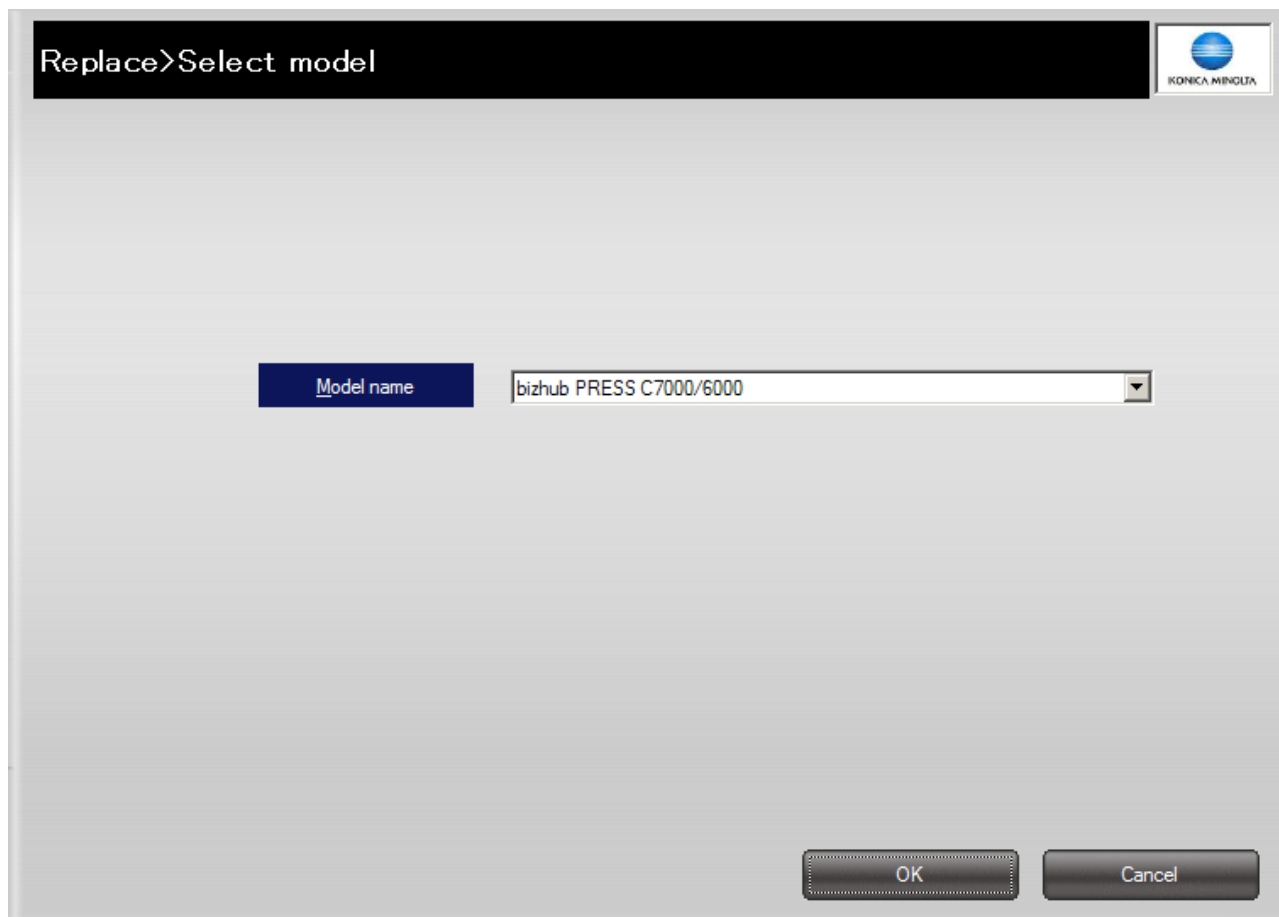
Note

- Information of up to 10 units can be read at a time of each replacement work.
When reading information of more than 10 units, exit the replacement work once and select "Replacement work " on the top screen again.
- While in replacement work, the Management Tool cannot be exited.
To exit the Management Tool, exit the replacement work.

(c) bizhub PRESS C7000/6000 replacement procedure

Note

- Depending on the saving destination of the cooperated counter data, there are 2 modes for the replacement on the bizhub PRESS C7000/6000.
 - USB cooperation mode:
Execute the counter reset directly to the counter data read from the main body to the USB memory with the "Save to External Memory" of ORU-M (Refer to [E.1.7.2 Save to External Memory](#)).
 - Folder cooperation mode:
Move the counter data read from the main body to the USB memory to the folder of the client PC once and execute the counter reset to the counter data in the folder with the "Save to External Memory" of ORU-M (Refer to [E.1.7.2 Save to External Memory](#)).
 - It is activated in the mode of the previous replacement, but the mode can be selected with "Option" (Refer to [E.1.8.4.\(8\) Option](#)). (Default is USB cooperation mode.)
1. Click "Replacement work" on the top screen.
Or select "Replacement work" in "Tool" menu.
 2. A screen to select machine type appears.

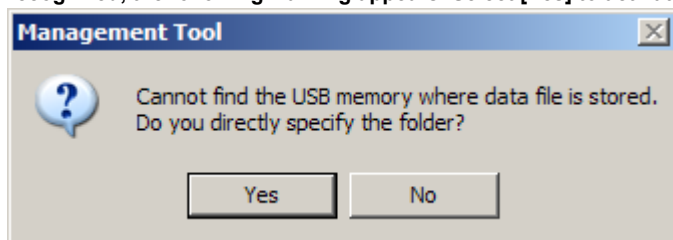


Select "bizhub PRESS C7000/6000" and click [OK] button.

Proceed to step 3.

Note

- When it is activated in the USB cooperation mode and the USB memory in which the data file is saved cannot be recognized, the following warning appears. Select [Yes] to activate in the folder cooperation mode.



3. Once the reading the data file of the USB memory or the folder completes, the writing screen appears. The read files are shown in a list on the center of the screen.

[illegible]

Note

- When it is activated in the folder cooperation mode, it cooperates with the folder of the previous replacement.

4. Select the data file which includes the unit to be replaced from the read data files and click "Select parts".

[illegible]

Note

- The unit with "blank" is the target unit of the replacement.
- The display of the unit column shows the condition of the unit.
 - Blank:
Unit whose part information is exported from the device (target to replace)
 - Completed editing:
Unit whose part to be reset the count has been selected, or whose unit serial number has been set
 - Already written.:
Unit whose part to be reset the count has been written in the data file
 - Already imported the device.:
Unit whose part information has been imported to the device
- For the unit with "Already imported the device." on the column, the part to be reset the count cannot be selected.

5. Once the reading of unit completes, the part selection screen appears.

The units read are listed on the left of the screen as buttons.

Replace>C7000/6000>Write>Select parts

Data file: A1DU00190003_ORU_DATA.bin
User name: (No User Setting) Change

Fusing Unit(1)
S/N:

Intermediate Transfer Unit(2)
S/N:

Fusing Unit
Serial number: FA1RFA72F9999996

Name	Part No.	Qty	Count	Life cycle
<input checked="" type="checkbox"/> Fusing Roller/L	A03U7203	1	410805	91%
<input checked="" type="checkbox"/> Fusing Belt	A03U7205	1	410805	91%
<input checked="" type="checkbox"/> Fusing Bearing/L	26NA5371	2	410805	91%
<input checked="" type="checkbox"/> Insulating Sleeve/L	A03U7227	2	410805	91%
<input checked="" type="checkbox"/> Fusing Drive Gear/O	A03U8095	1	410805	91%
<input type="checkbox"/> Paper Exit Roller/Up	A03U7225	2	392685	87%
<input type="checkbox"/> Fusing Limiter	65AA5365	1	410805	68%
<input type="checkbox"/> Fusing Regulating Gear	65AA7747	1	410805	68%
<input type="checkbox"/> Fusing Roller/2	A03U7202	1	410805	45%
<input type="checkbox"/> Belt Regulating Sleeve	A03U7250	2	410805	45%
<input type="checkbox"/> Insulating Sleeve/U	A03U7295	2	410805	45%
<input type="checkbox"/> Fusing Roller/1	A03U7201	1	410805	45%

CSV export... Print... Parts count Unit/machine Basic info Back to writing screen Cancel Replace

6. Select the unit to replace, select the part to reset the count, and then click "Back to writing screen".

Replace>C7000/6000>Write>Select parts

Data file: A1DU00190003_ORU_DATA.bin
User name: (No User Setting) Change

Fusing Unit(1)
S/N:

Intermediate Transfer Unit(2)
S/N:

Intermediate Transfer Unit
Serial number: LA1RFA72L9999996

Name	Part No.	Qty	Count	Life cycle
<input checked="" type="checkbox"/> Belt Cleaning Blade(Distan...	A03U5530	1	13185	8%
<input checked="" type="checkbox"/> Intermediate Transfer Belt	A03U5042	1	17087	4%
<input checked="" type="checkbox"/> Toner Recovery Sheet	A1DUA532	1	17087	4%
<input type="checkbox"/> 1st Transfer Roller/K	A03U5004	1	17087	4%
<input type="checkbox"/> 2nd Transfer Roller/U	65AA2611	1	17087	4%
<input type="checkbox"/> 1st Transfer Roller/Y	A03U5012	1	12830	3%
<input type="checkbox"/> 1st Transfer Roller/M	A03U5012	1	12830	3%
<input type="checkbox"/> 1st Transfer Roller/C	A03U5012	1	12830	3%
<input type="checkbox"/> Transfer Belt Cleaning Unit	A1DUA530	1	17087	2%
<input type="checkbox"/> Transfer Belt Separation Cl...	A1DUA518	3	17087	2%
<input type="checkbox"/> Separation Claw Solenoid	26NA8251	1	15198	1%
<input type="checkbox"/> Transfer Roller Resin	65AA2638	8	17087	0%

CSV export... Print... Parts count Unit/machine Basic info Back to writing screen Cancel Replace

On the parts selecting screen, the unit serial number (alphanumeric characters in 16-digit) can be input. Blank is also available when the serial number is not needed.

Intermediate Transfer Unit

Serial number: LA1RFA72L9999996

Name	Part No.	Qty	Count	Life cycle
------	----------	-----	-------	------------

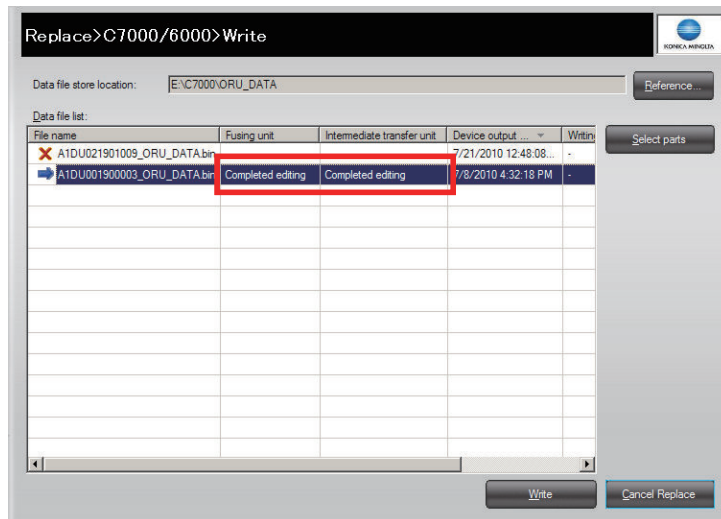
Conduct the same operation to all units to be replaced.

Note

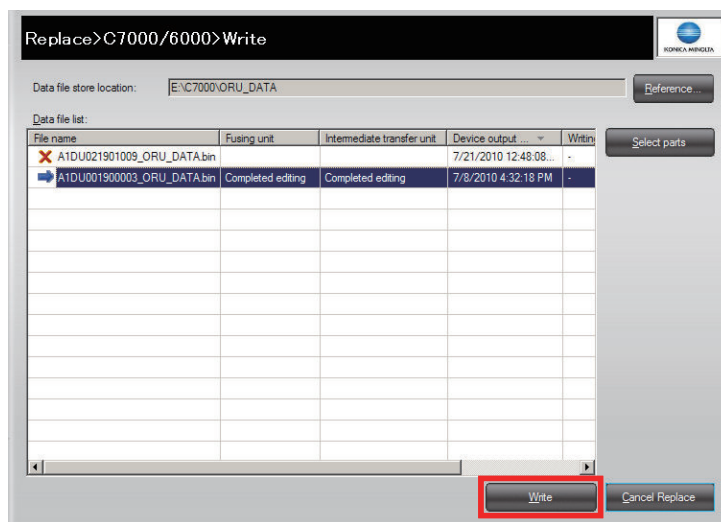
- Writing to data file is not executed by clicking the "Back to writing screen" on the parts selecting screen. Writing to the data file is executed on the writing screen. For details, refer to the steps 7 and the later.
- The input unit serial number is reflected when you return to the writing screen. The display is not updated during inputting the number. The serial number displayed on the button on the left of the screen and the unit/machine information shows the old information before inputting the number.

7. Writing screen appears.

Confirm that the unit with part selected is "Completed editing".



8. Repeat steps 4 to 7 to all data files which include the unit to be replaced.
9. Click "Write" button.



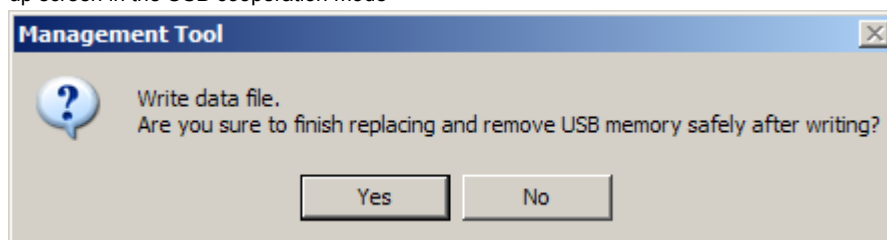
Note

- Click "Reference" button of the writing screen and select the folder to switch to the folder cooperate mode.
- In the next replacement, it is activated in the mode of the previous replacement. This mode can be switched with "Option" (Refer to [E.1.8.4.\(8\) Option](#)).

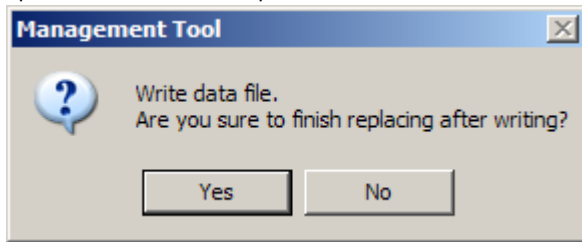
10. A writing confirmation message appears and "Completed editing" unit is written in the data file of the USB memory or the PC folder. Then, the replacement completes.

In the USB cooperate mode, once the replacement completes, the USB memory can be removed safely.

* Pop-up screen in the USB cooperation mode



* Pop-up screen in the folder cooperation mode

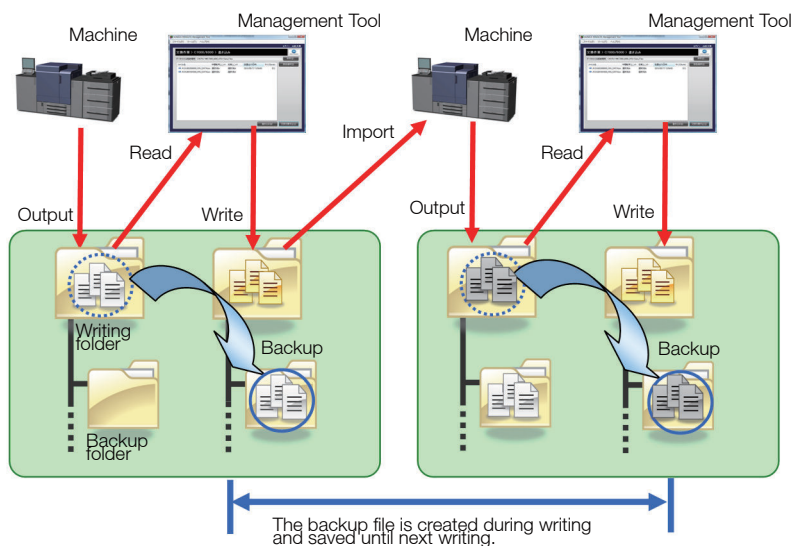


Note

- Be sure not to disconnect the USB memory until the writing completes since it takes time to complete writing to the USB memory in the USB cooperation mode.
- When the USB memory failed to be removed safely, writing to data file may not complete properly. Confirm that no other program uses the USB memory and write to the data file again.
- In the folder cooperate mode, be careful not to mistake the import data when cooperating with the C7000/6000 main body.
- While in replacement work, the Management Tool cannot be exited.
To exit the Management Tool, exit the replacement work.

(d) Backup file (bizhub PRESS C7000/6000)

In the replacement of the bizhub PRESS C7000/6000, back up the data file at writing to the data file.



Note

- If the wrong information is written with Management Tool, take back the backup file to the writing folder to recover the information.
- When several writings are executed to 1 data file, the data to be recovered is the data file which written before the last writing.
- For the backup file in the USB cooperation mode, a backup folder is created automatically and saved in the ORU-DATA folder.
- For the backup file in the folder cooperation mode, a backup folder is created automatically and saved in the folder that is the same as the data file.

(e) Associating customers

When the device serial number and the user information are properly associated, the user information is displayed on the operation information automatically.

When not set, " (No User Setting)" is displayed.

To modify the association between the unit read and the user, conduct the following procedures.

- Click "Change" to display the user setting screen.
- Select the desired user setting and click [OK].

[illegible]

The user setting of the work information is changed.

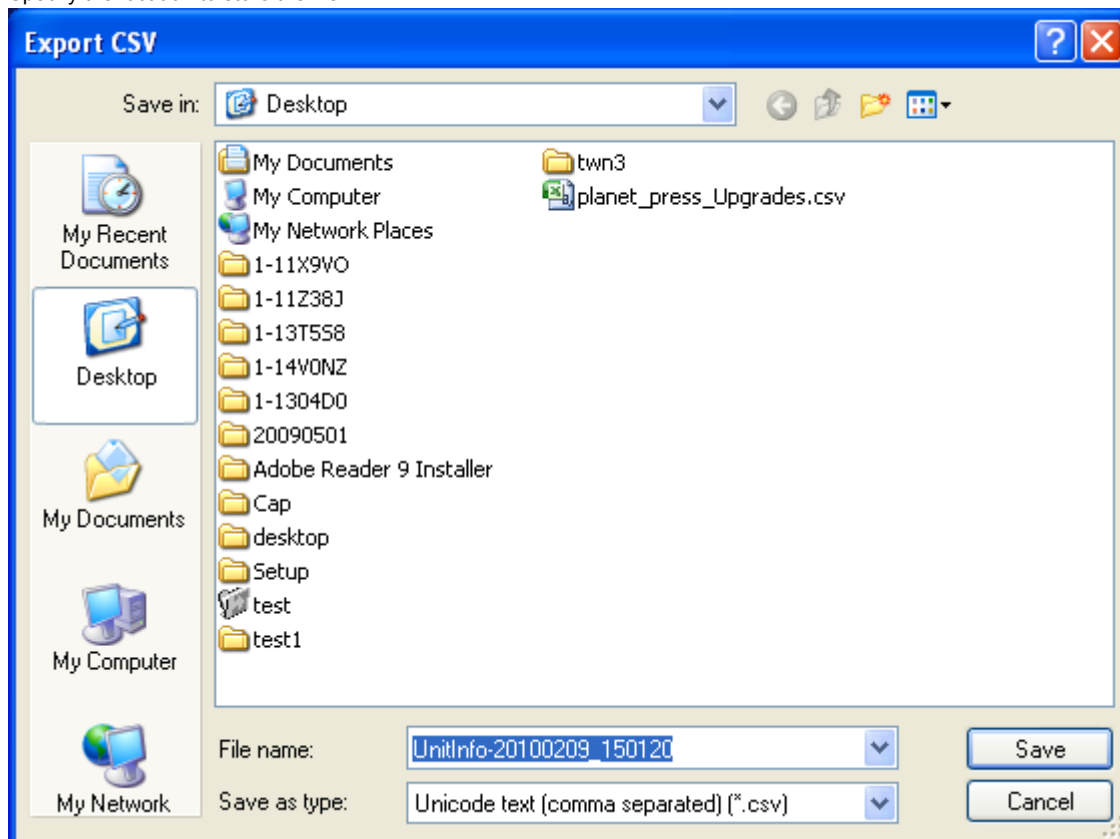
Note

- For details on user registration, refer to [E.1.8.4.\(4\) Register user.](#)

(f) Export the csv format file

The detailed information of the unit currently displayed is exported in CSV format.

1. Specify the location to store the file.

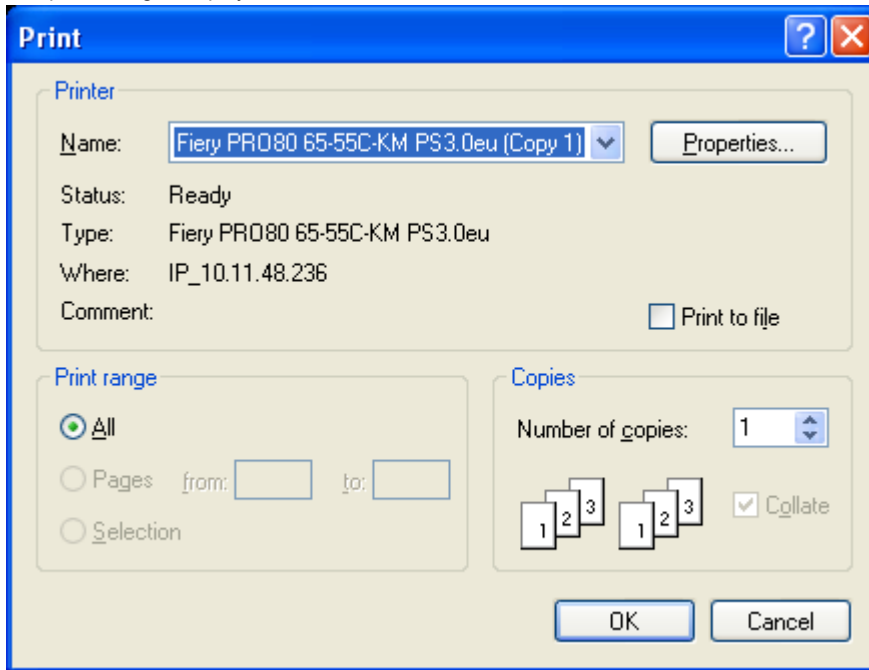


2. Click [Save].
The CSV file is exported to the specified location.
For details on CSV format, refer to [E.1.8.6.\(6\) Export CSV](#).

(g) Printing the report

The detailed information of the unit currently displayed can be printed as report.

1. The print dialog is displayed.



2. Click [OK].
The report is printed.
For details on print layout, refer to [E.1.8.6.\(7\) Print Report](#).

(3) Work log

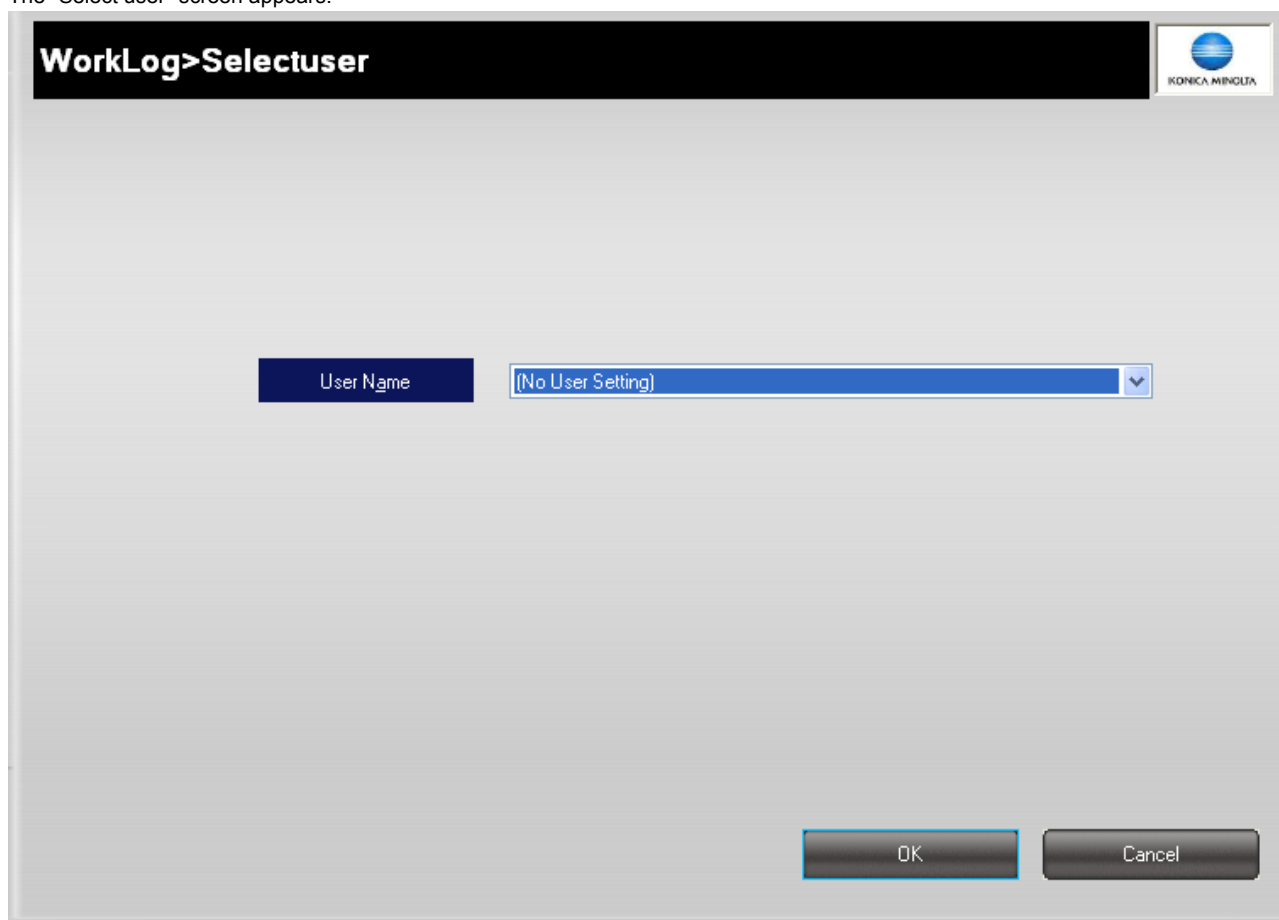
The work conditions of previous replacement work can be checked.

(a) Procedures to display the work log list

1. Click "Work log" on the top screen.
Or select "Work log" in "Tool" menu.
2. The work log referring method selection screen appears.
 - To display the work log by selecting the user, click "Select user."
Proceed to [step 3](#).
 - To display the work log by selecting the technician, click "Select technician."
Proceed to [step 4](#).
 - To display all the work log, click "All."
Proceed to [step 5](#).




3. The "Select user" screen appears.



Select the user to check the work log, and click "OK."
Proceed to [step 5](#).

4. The "Select technician" screen appears.

WorkLog>Select tech


Technician name:

Aaaa Bbbb(konicaminolta) ▼

OK

Cancel


Select the technician to check the work log, and click "OK."

Proceed to [step 5](#).

5. The work log list is displayed.

On the work log list, filtering by conditions or sorting displayed items is available.

Select the work log information to check its detail, export as CSV or print report.

WorkLog>List


Show

User name: (All) ▼

Technician name: (All) ▼

Machine S/N: (All) ▼

Unit type: (All) ▼

Unit type	Times of...	Unit remov...	Count read date ▲	Count reset date	The last undo r
Fusing	0	-	2/9/2010 11:41:20 ...	-	-
Fusing	0	-	2/9/2010 11:57:36 ...	-	-
2nd transfer	0	-	2/9/2010 2:21:32 PM	-	-
Fusing	0	-	2/9/2010 2:21:41 PM	-	-
2nd transfer	0	-	2/9/2010 2:24:10 PM	-	-
Fusing	0	-	2/9/2010 2:24:24 PM	2/9/2010 2:35:06 PM	-
Fusing	0	-	2/9/2010 2:36:16 PM	2/9/2010 2:48:57 PM	-
2nd transfer	0	-	2/9/2010 2:36:28 PM	-	-

Set list view

To ref selection

Close log

Details

CSV export...

Print...

Import...

Export...

For the display filter, the displayed contents differs depending on the display method selected on the work log reference method in step 2.

When selecting "Select user":

User name:

Show

Machine S/N:

Unit type:

When selecting "Select technician":

Technician name:

Show

Machine S/N:

Unit type:

Note

- The items can be sorted in descending/ascending order by clicking the item name of the work log list. The mark ▲ indicates that the current display is in ascending order. Click it to change in descending order.

Unit type	Times of replacement	Unit removal date	Count read ... ▲	Count reset date	The last ur
Fusing	0	-	2/9/2010 11:57:36...	-	-
2nd transfer	0	-	2/9/2010 2:21:32 ...	-	-

- On the work log list screen, the items to be displayed and their display width can be changed via "Set list view". (Refer to [E.1.8.6.\(5\) Set list view](#))
- Click [Export CSV] to export the work log information currently selected in CSV format. (Refer to [E.1.8.6.\(6\) Export CSV](#))
- Click [Print] to print the report of the work log information currently selected. (Refer to [E.1.8.6.\(7\) Print Report](#))

(b) Detailed information

The detailed information of the replacement work log selected on the work log list is displayed.
Change the user to be associated or edit the work information memo.

[illegible]

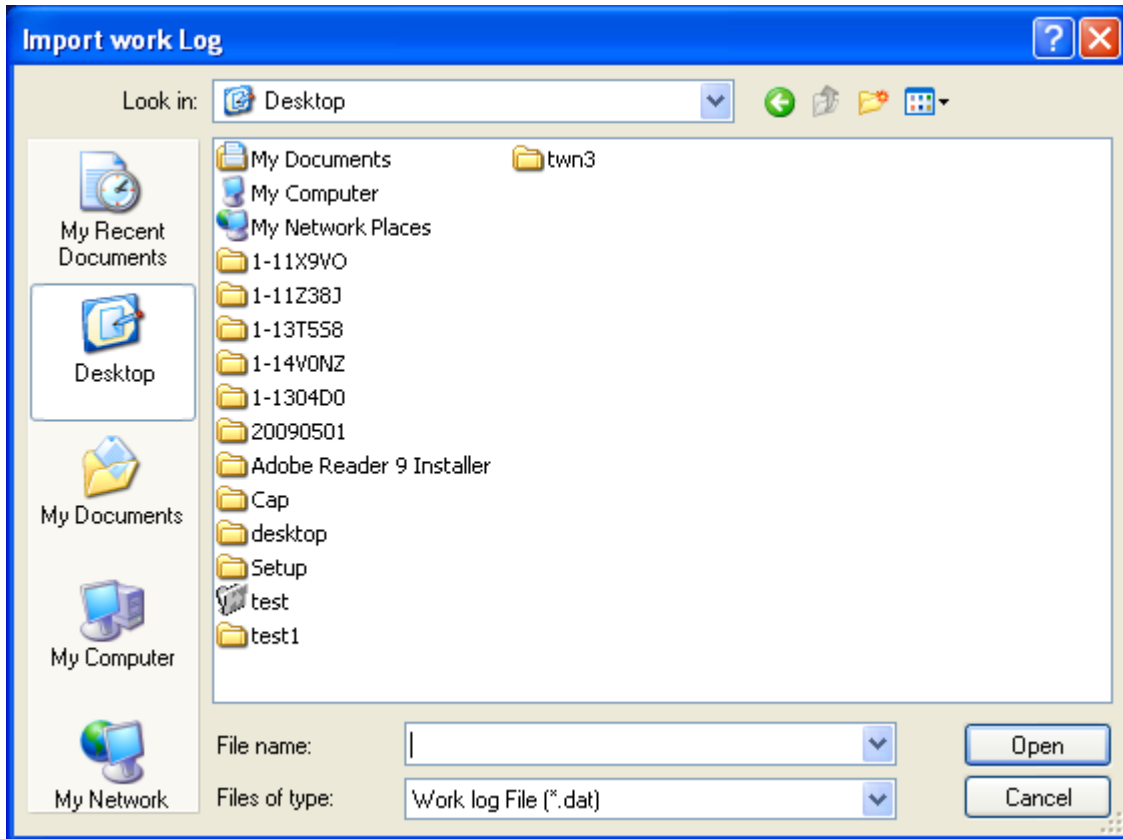
Note

- Click [Back] or [Next] to switch the work log displayed.
- Click [Export CSV] to export the work log information currently displayed in CSV format. (Refer to [E.1.8.6.\(6\) Export CSV](#))
- Click [Print] to print the report of the work log information currently displayed. (Refer to [E.1.8.6.\(7\) Print Report](#))
- For details on user association, refer to [E.1.8.4.\(2\).\(e\) Associating customers](#).

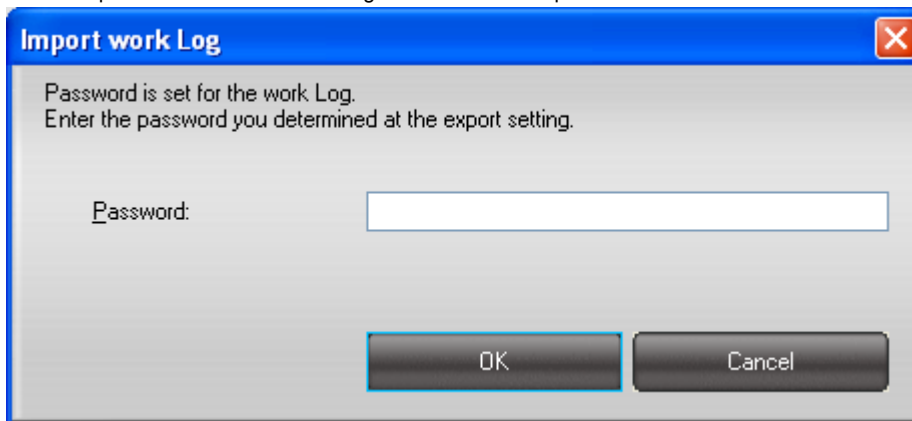
(c) Import

Import the work log which is exported from Management Tool.

1. Specify the storage location of the work log file to import.



2. Click [Open].
3. The password input screen is displayed.
Enter the password set on the work log file when it was exported.



4. Click [OK].
The work log file is imported.

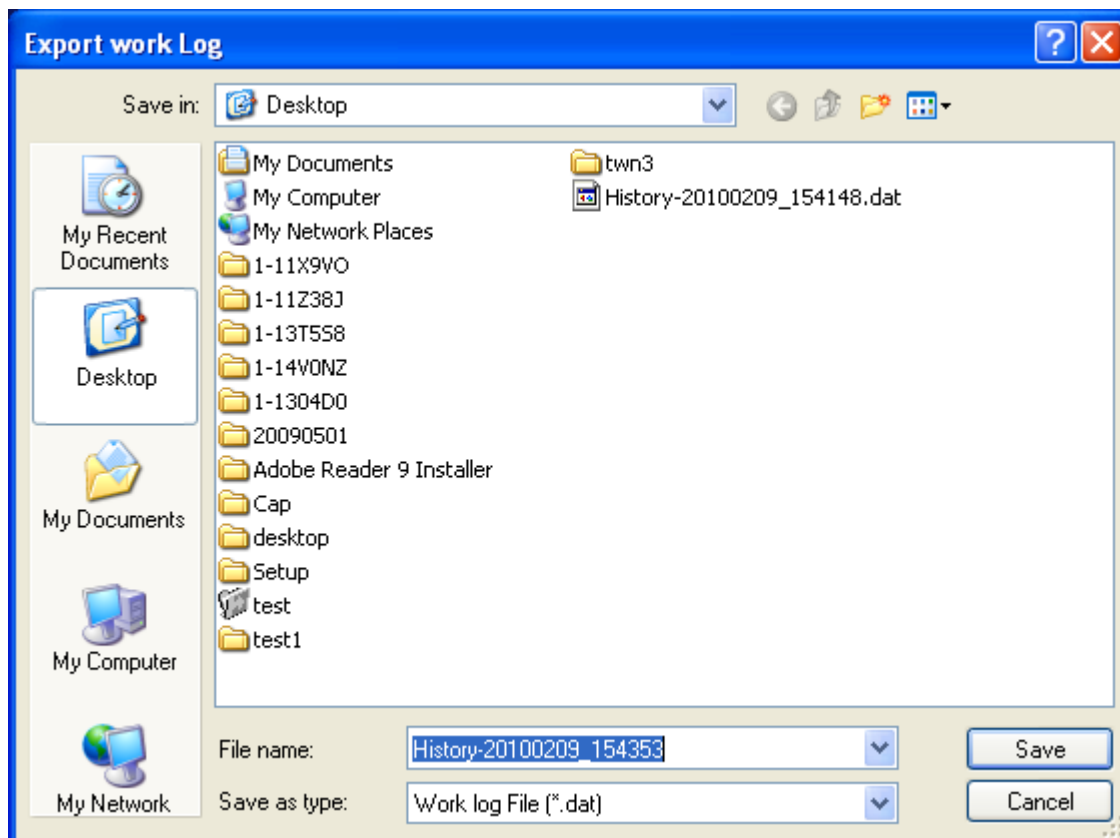
Note

- Use one-byte alphanumeric characters and symbols for password.
- The work log information already exists is not imported.
- The invalid work log information is skipped and the import process continues.
- The work log exported by other computer also can be imported. However it happens that the work log information is overlapped.

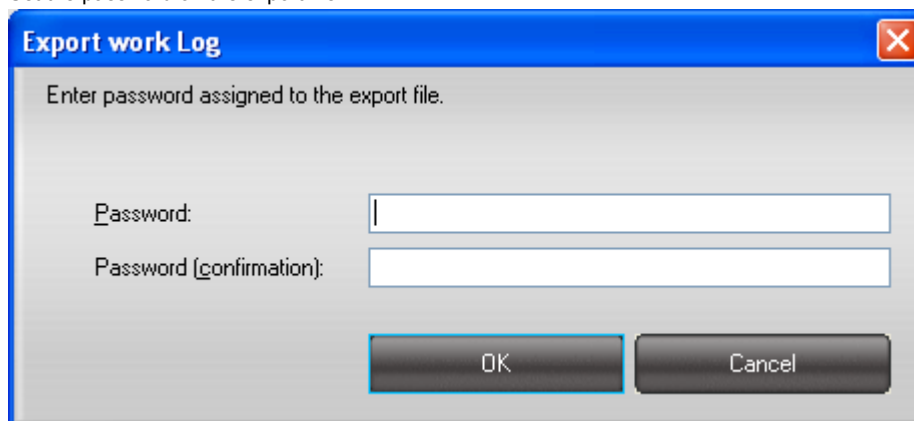
(d) Export

Export the work log collectively.

1. Specify the location to store the file.



2. Click [Save].
3. The password input screen is displayed.
Set the password on the export file.



4. Click [OK].
The export of the work log starts.

Note

- Use one-byte alphanumeric characters and symbols for password.
- The password set on the export file is required when importing it.
- The file format "Work log file" is a format to display the contents on the Management Tool. When the file is stored in other format, the file is unable to open on the Management Tool.

(4) Register user

Register, edit or delete the user information.

(a) User list

Click [RegisterUser] on the top screen.
Or select "RegisterUser" in "Tool" menu.

[illegible]

Note


- The items can be sorted in descending/ascending order by clicking the item name of the user information list. The mark ▲ indicates that the current display is in ascending order. Click it to change in descending order.

User name	Type of ...	User code	User office...	Contact perso...	Contact telephone
Aaaa Bbbb	CP	00000001		Cccc Dddd	001-111-1111
Ffff Gggg	CRD	00000002		Hhhh Oooo	012-345-5678
Rrrr Tttt	Others	00000003		Yyyy Uuuu	888-999-9687

- On the user information list screen, the items to be displayed and their display width can be changed via "Set list view".
(Refer to [E.1.8.6.\(5\) Set list view](#))

(b) Initial registration

Register the user information.

RegisterUser>List>New


[* Must item]

User name: *

Type of business: *

User code:

User ID:

User office location name:

User office location code:

Contact person name:

Contact person ID No.:

Contact telephone:

Machine list:

1234567890
9999900000

Machine serial number to add:

Remark:

1. Click [New] on the user list screen.
2. The registration screen is displayed.
3. Enter "User name."
Use 1 to 64 characters regardless of whether one-byte or two byte.
4. Select "Type of business."
5. Enter the following items if necessary.
 - Enter "User code." Use 0 to 32 one-byte alphanumeric characters and symbols.
 - Enter "User ID." Use 0 to 32 one-byte alphanumeric characters and symbols.
 - Enter "User office location name." Use 0 to 256 characters regardless of whether one-byte or two byte.
 - Enter "User office location code." Use 0 to 32 one-byte alphanumeric characters and symbols.
 - Enter "Contact person name." Use 0 to 64 characters regardless of whether one-byte or two byte.
 - Enter "Contact person ID no." Use 0 to 32 one-byte alphanumeric characters and symbols.
 - Enter "Contact telephone." Use 0 to 32 one-byte alphanumeric characters and symbols.
 - Register "Machine list".
Enter "Machine serial number to add." Use 1 to 13 one-byte alphanumeric characters and symbols. Click "Add" to add it to "Machine list".
Select and click the serial number to delete from "Machine list".
 - Enter "Remark."
6. Click [Register].
The entered user information is registered and the next user information can be registered.

Note

- **Register the serial number of the machine of the user to "Machine list" so that the user information is automatically associated when reading unit information while in the replacement work.**

(c) Edit

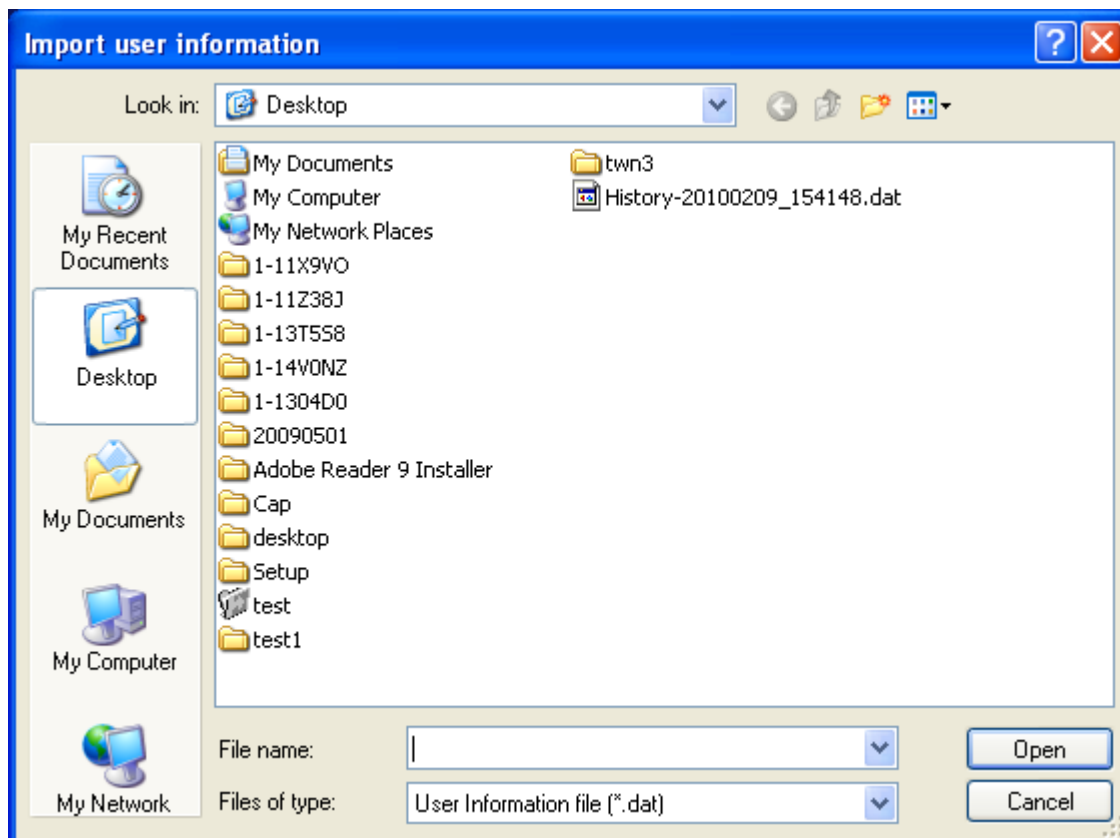
Edit a registered user information.

1. Edit the items to be changed.
For entering each items, refer to [E.1.8.4.\(4\).\(b\) Initial registration](#).
2. Click [OK].
The edited result is reflected to the user information.

(d) Import

Import the user information which is exported from Management Tool.

1. Specify the storage location of the user information file to import.



2. Click [Open].
The user information file is imported.

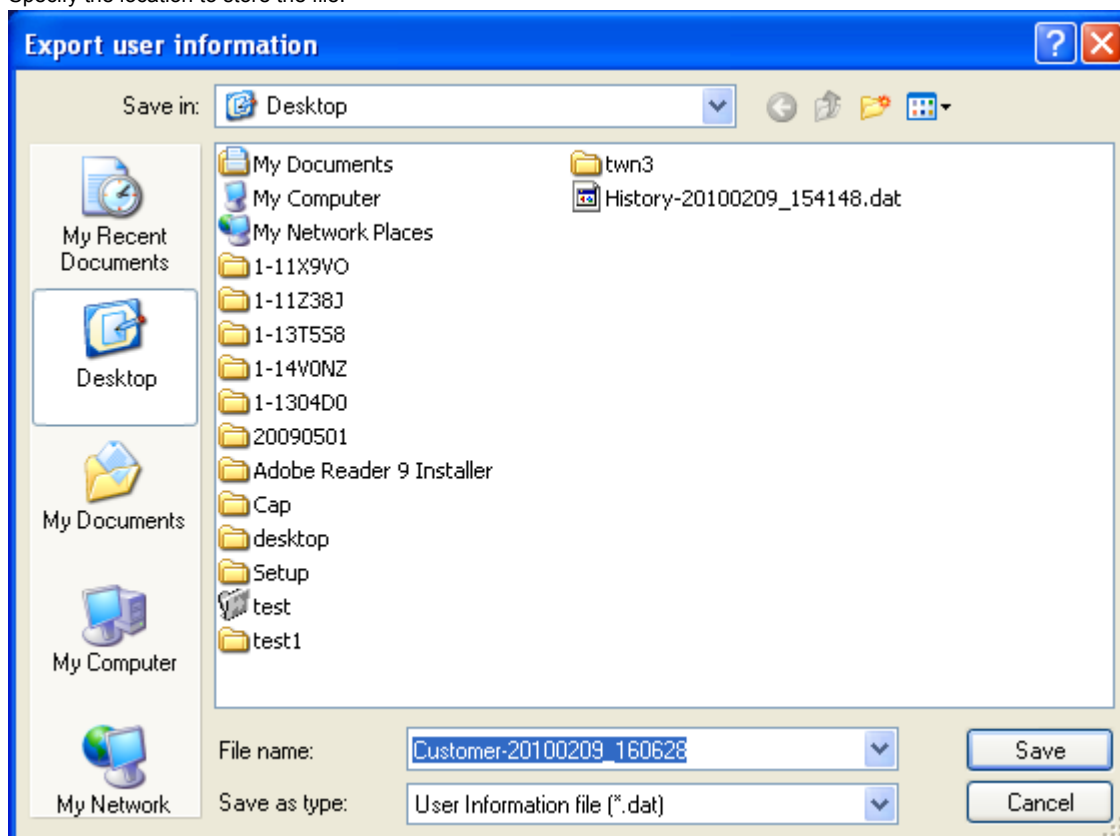
Note

- The user information already exists is not imported.

(e) Export

Export the user information collectively.

1. Specify the location to store the file.



2. Click [Save].

The export of the user information starts.

Note

- The file format "User Information file" is a format to display the contents on the Management Tool. When the file is stored in other format, the file is unable to open on the Management Tool.

(5) SetPersonal

Change the password of login technician or edit the comment.

SetPersonal>Tech

Registration No. 001

Technician name: Aaaa Bbbb

Technician code:

Country: Japan

Company name: konicaminolta

Company code:

Service office name:

Service office code:

Remark:

Password change:

OK Cancel

(a) Password Change

1. Click "Password change."

The password change screen is displayed. The password can be changed at this time.

SetPersonal>Tech>ChangePW

Current password:

New password:

New Password (confirmation):

OK Cancel

2. Click [OK].

The new Password is set.

Note

- Use one-byte alphanumeric characters and symbols for password.

(6) Serial number setting (bizhub PRESS C8000)

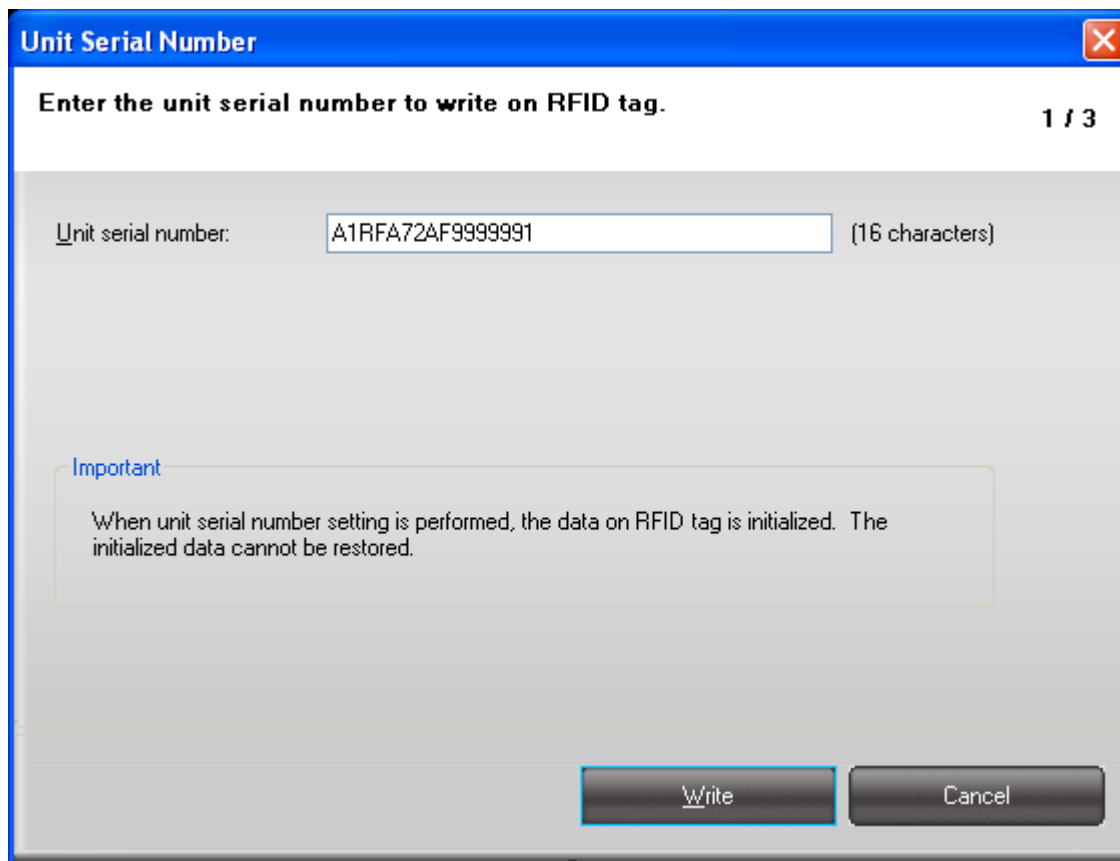
The unit serial number is written in the RFID tag.

Note

- When replacing the RFID tag because of such as physical damage, the new RFID tag can be recognized by the unit.

(a) Procedures of the unit serial number setting

1. Select "Unit Serial Number" from "Tool" menu.
When the RFID tag reader is not recognized, the process does not proceed to step 2. Check that the RFID tag reader is correctly connected.
2. The wizard starts up and the unit serial number input screen is displayed.
Enter the unit serial number and click "Write."



The dialog box has a blue title bar with the text "Unit Serial Number" and a close button. The main area has a white header with the text "Enter the unit serial number to write on RFID tag." and a page indicator "1 / 3". Below the header is a text input field with the value "A1RFA72AF9999991" and a label "(16 characters)". Below the input field is an "Important" section with a yellow border and the text: "When unit serial number setting is performed, the data on RFID tag is initialized. The initialized data cannot be restored." At the bottom right are two buttons: "Write" and "Cancel".

Unit Serial Number

Enter the unit serial number to write on RFID tag. 1 / 3

Unit serial number: A1RFA72AF9999991 (16 characters)

Important

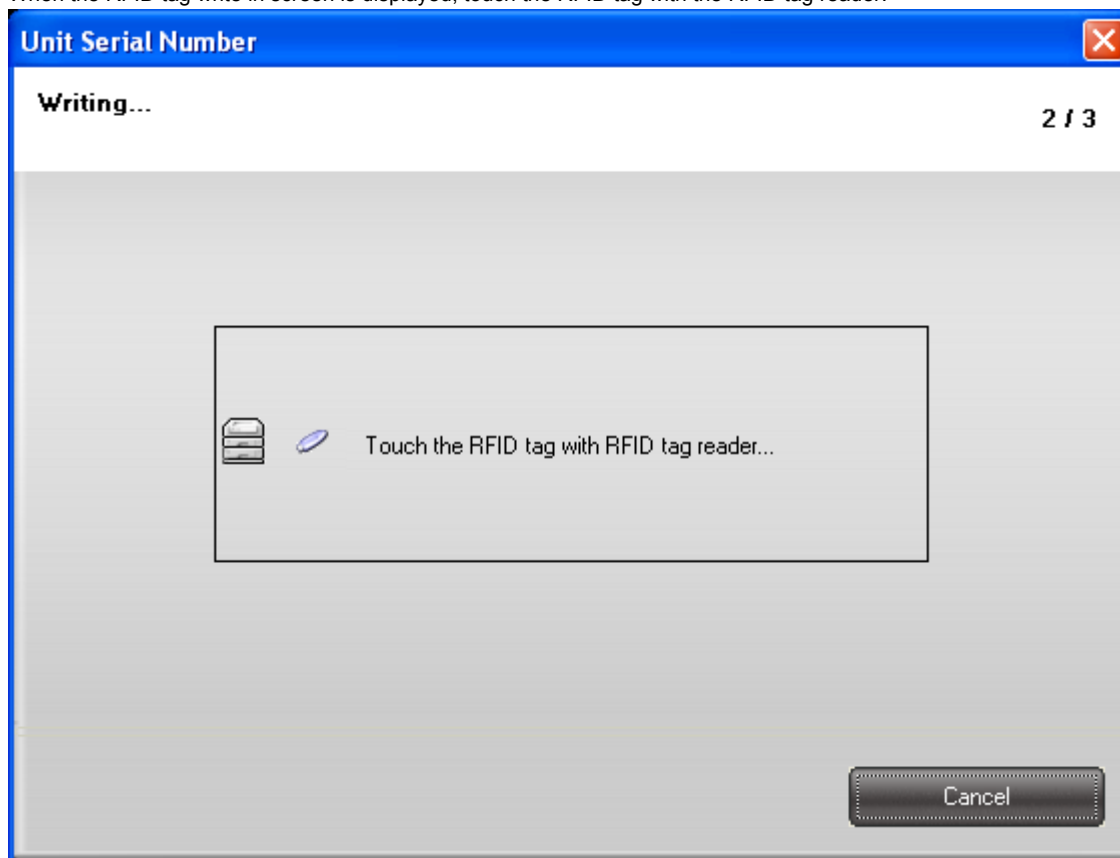
When unit serial number setting is performed, the data on RFID tag is initialized. The initialized data cannot be restored.

Write Cancel

Note

- Serial number setting initializes the RFID tag data. The initialized data cannot be restored.

3. When the RFID tag write in screen is displayed, touch the RFID tag with the RFID tag reader.



The dialog box has a blue title bar with the text "Unit Serial Number" and a close button. The main area has a white header with the text "Writing..." and a page indicator "2 / 3". Below the header is a large gray rectangular area with a white border. Inside this area are two icons: a stack of three hard drives and a blue circular RFID tag. To the right of the icons is the text "Touch the RFID tag with RFID tag reader...". At the bottom right is a "Cancel" button.

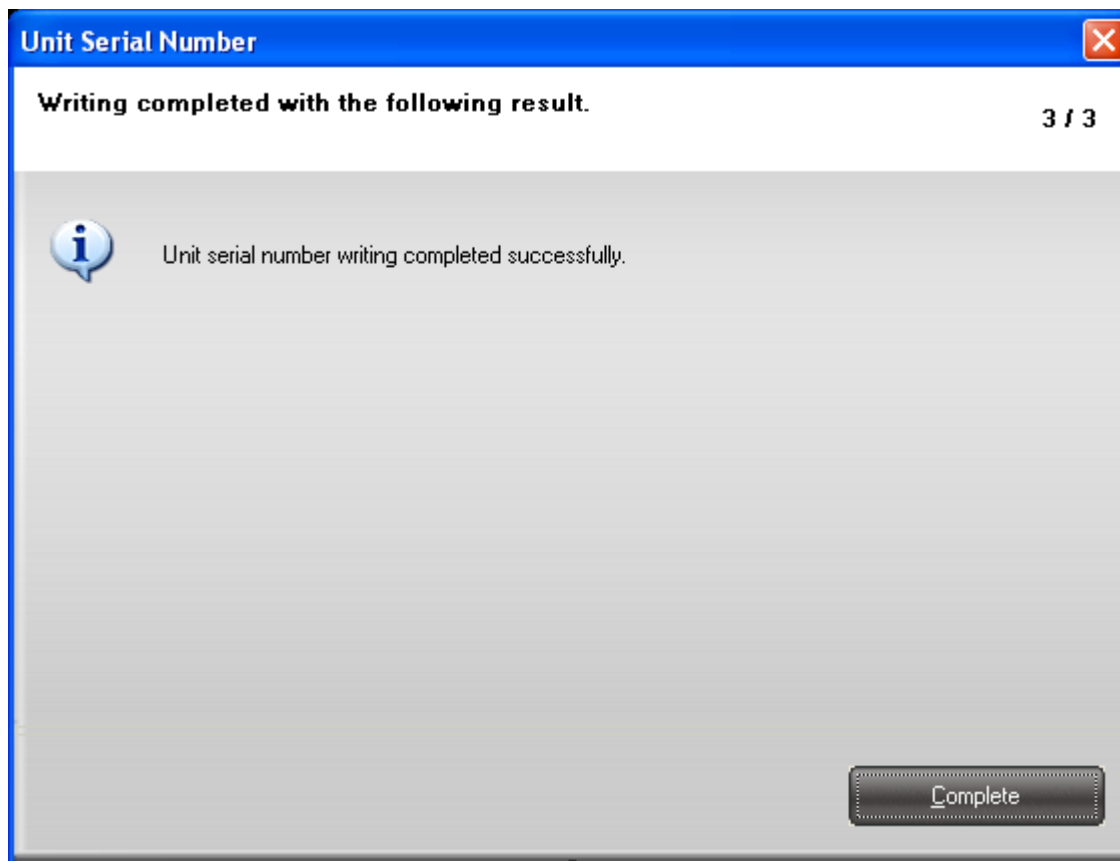
Unit Serial Number

Writing... 2 / 3

Touch the RFID tag with RFID tag reader...

Cancel

4. When writing is completed, the result screen is displayed.



(7) Intermediate transfer steering sensor information setting (bizhub PRESS C8000)

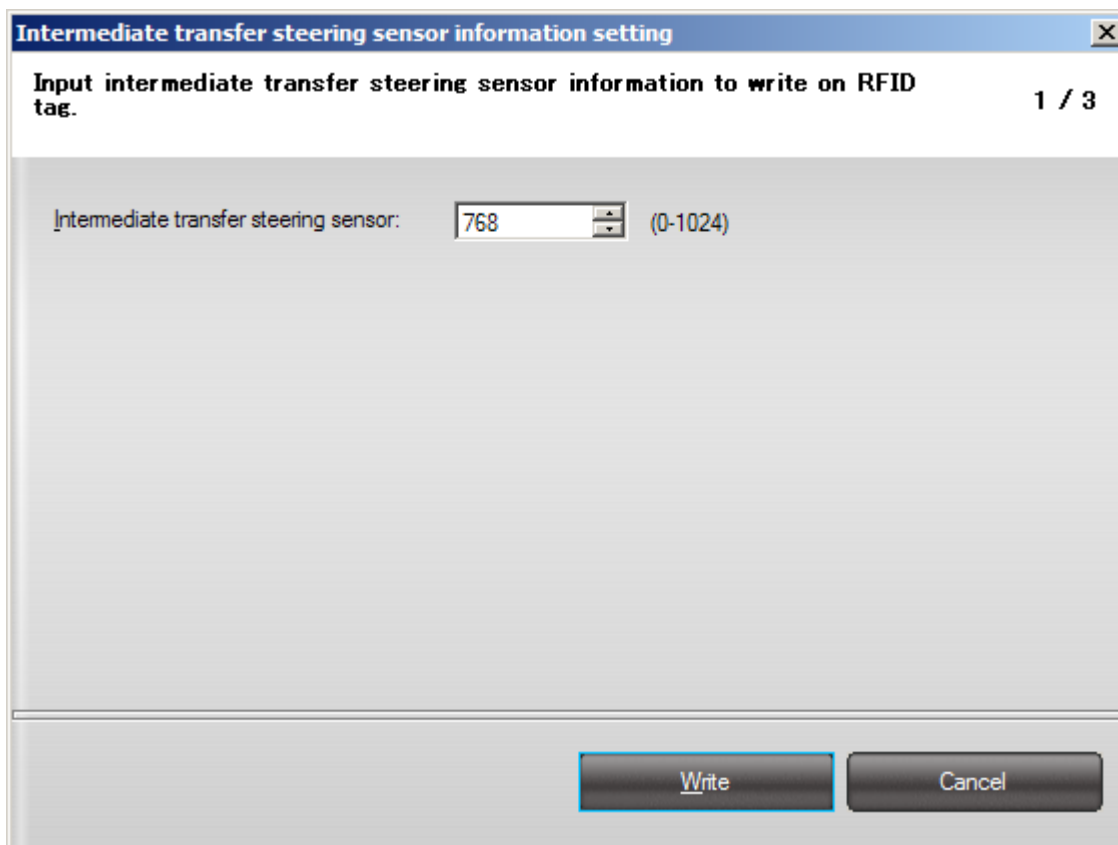
The initial value of the intermediate transfer steering sensor is written to the RFID tag.

(a) Procedures of the intermediate transfer steering sensor information setting

1. Select "Intermediate transfer steering sensor information setting" from "Tool" menu.

Note

- When the RFID tag reader is not recognized, the process does not proceed to step 2. Check that the RFID tag reader is correctly connected.
2. Wizard is activated and the intermediate transfer steering sensor information input screen appears.



Intermediate transfer steering sensor information setting

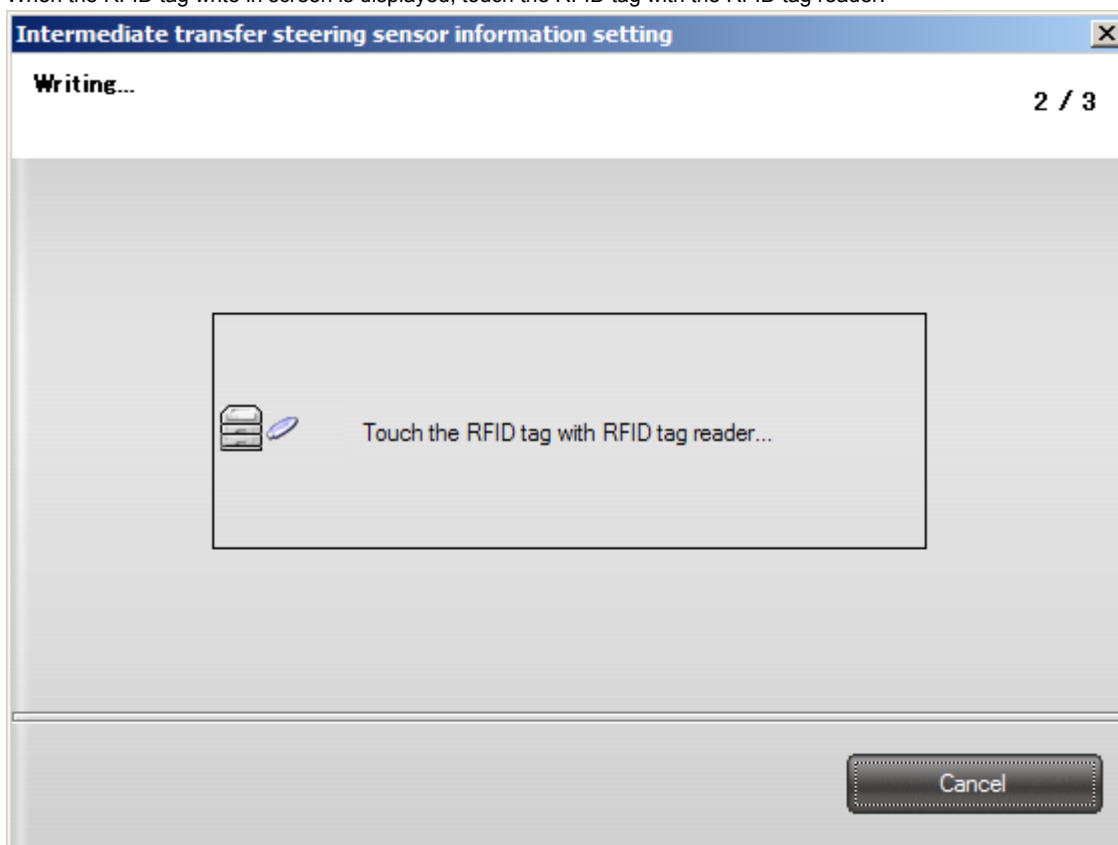
Input intermediate transfer steering sensor information to write on RFID tag. 1 / 3

Intermediate transfer steering sensor: 768 (0-1024)

Write Cancel

Input the intermediate transfer steering sensor information and click "Write".

3. When the RFID tag write in screen is displayed, touch the RFID tag with the RFID tag reader.



Intermediate transfer steering sensor information setting

Writing... 2 / 3

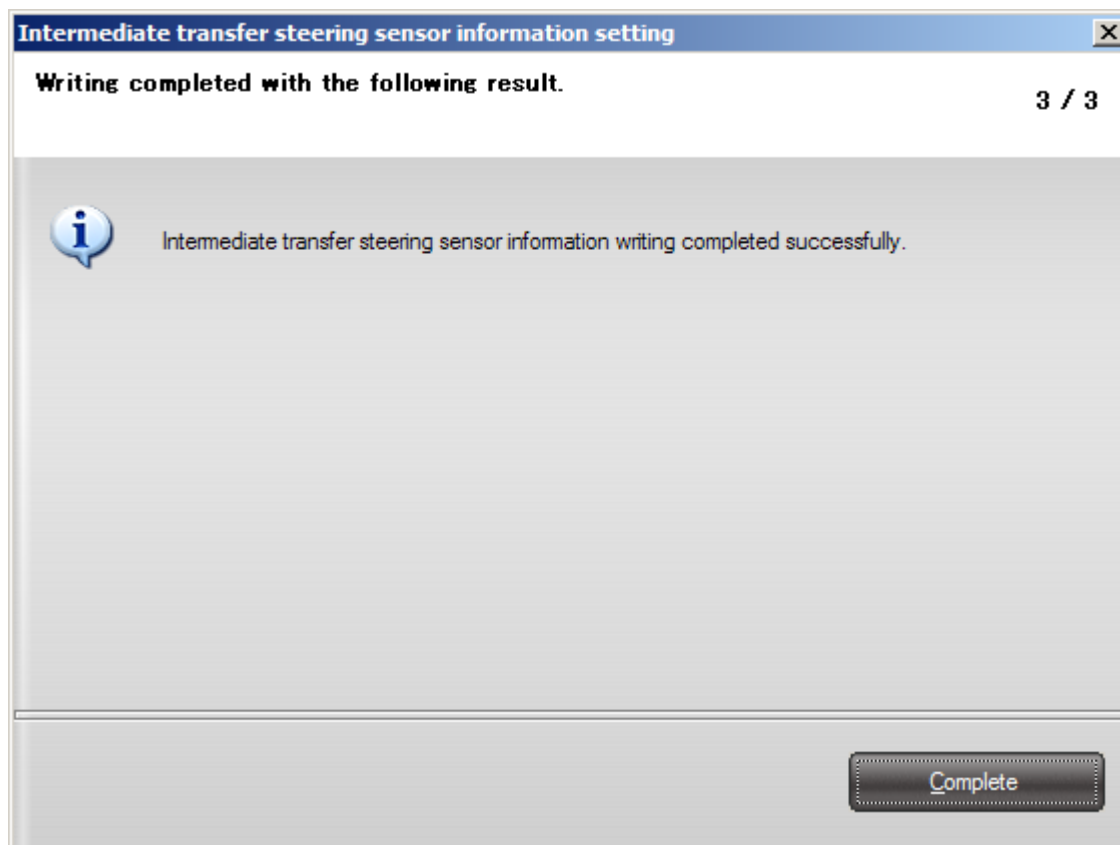
Touch the RFID tag with RFID tag reader...

Cancel

Note

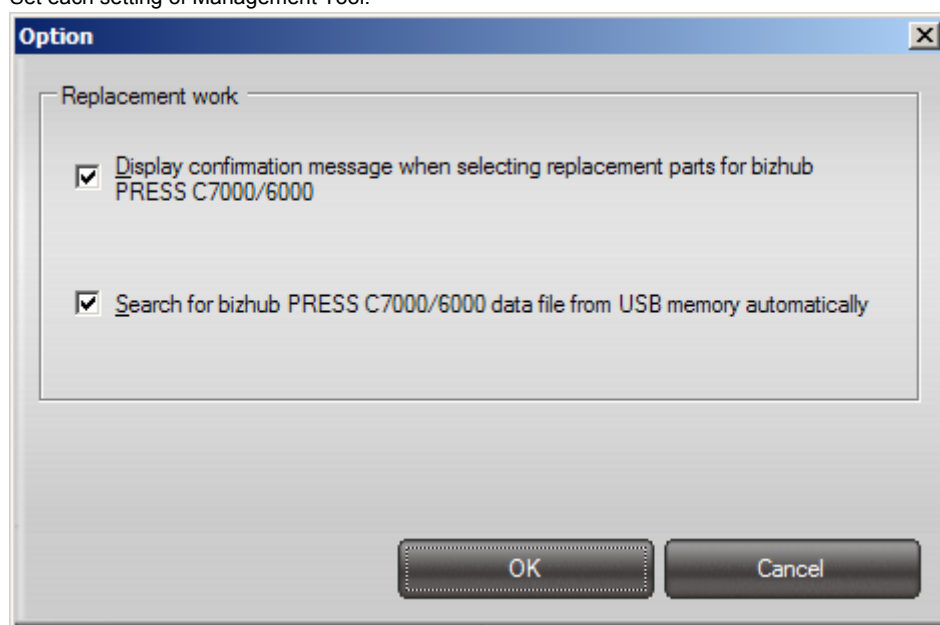
- Touch the RFID tag in which the data of the intermediate transfer unit is saved.

4. When writing is completed, the result screen is displayed.



(8) Option

Set each setting of Management Tool.



(a) Display a confirmation message when selecting a part to be replaced of the bizhub PRESS C7000/6000.

Select whether to display the message to confirm the target unit after selecting the part at the replacement of the bizhub PRESS C7000/6000.

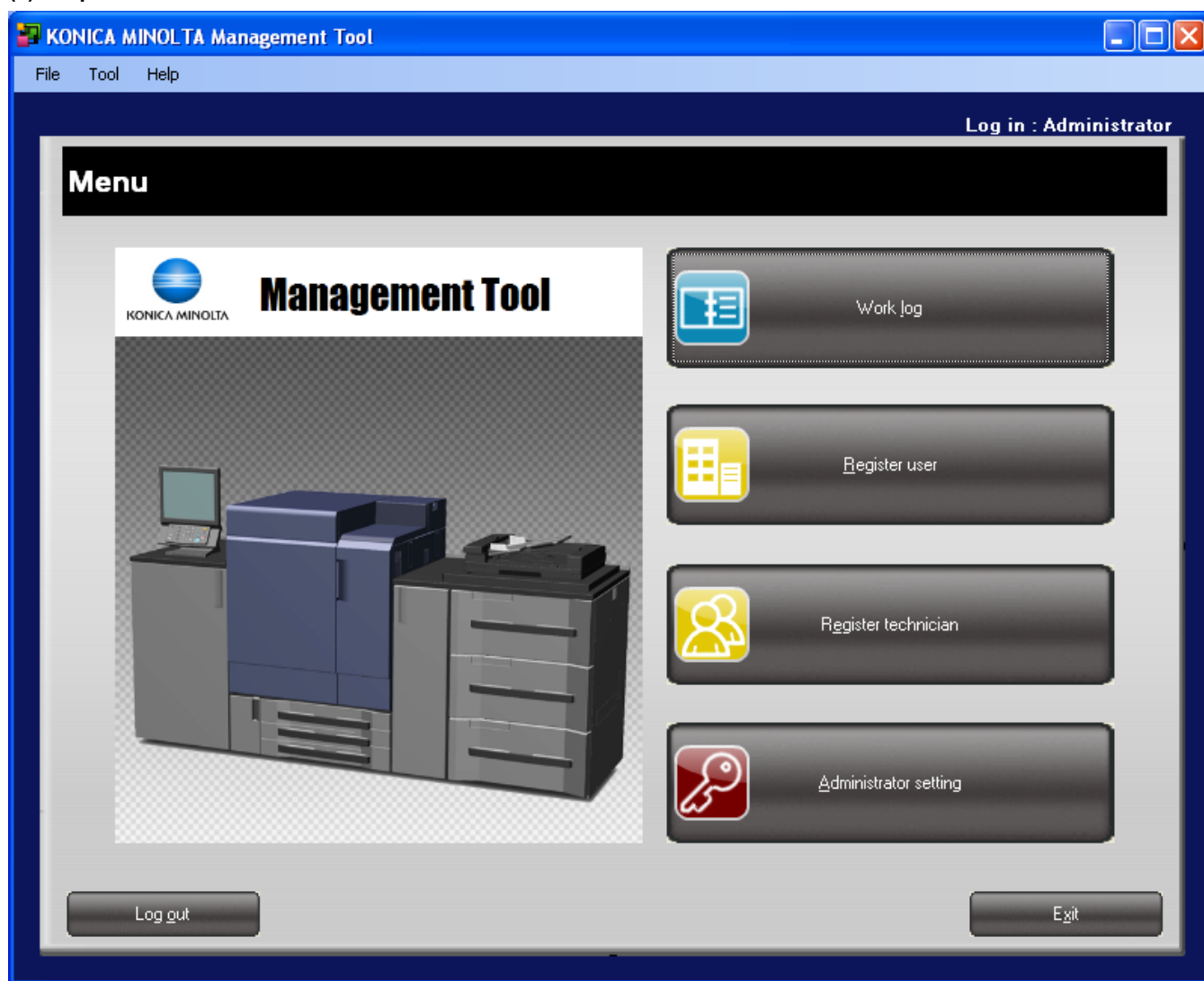
(b) Locate the data file of the bizhub PRESS C7000/6000 in the USB memory.

Set the activation mode of the replacement of the bizhub PRESS C7000/6000.

- When the box is checked, the replacement is activated in USB memory cooperation mode.
- When the box is not checked, the replacement is activated in folder cooperation mode.

1.8.5 Administrator mode

Set the required information of the Management Tool.

(1) Top screen

When logging in successfully, the top screen is displayed.

- To check the work log, click "WorkLog" button. (Refer to [E.1.8.5.\(3\) Administrator Setting](#))
- To register the customer information, click "RegisterUser" button. (Refer to [E.1.8.4.\(4\) Register user](#))
- To register a technician, click "RegisterTech" button. (Refer to [E.1.8.5.\(2\) Register technician](#))
- To change the administrator password, click "Admin.setting" button. (Refer to [E.1.8.5.\(3\) Administrator Setting](#))

(2) Register technician

Register, edit or delete the technician information.

(a) Technician list

Click [RegisterTech] on the top screen.

Or select "RegisterTech" in "Tool" menu.

[illegible]

Note

- The items can be sorted in descending/ascending order by clicking the item name of the technician information list. The mark ▲ indicates that the current display is in ascending order. Click it to change in descending order.

Registration no	Technician name	Technician code	Company name	Service office name
001	Aaaa Bbbb	0000000001	konicaminolta	
002	Cccc Dddd	0000000002	konicaminolta	

- On the technician information list screen, the items to be displayed and their display width can be changed via "Set View". (Refer to [E.1.8.6.\(5\) Set list view](#))

(b) Initial registration

Register a new technician information.

The items with "*" must be filled.

RegisterTech>List>New

Registration No.	<input type="text" value="007"/>	(* Must item)
Technician name:*	<input type="text" value="Pppp Kkkk"/>	
Password:	<input type="password" value="....."/>	
Password (confirmation):	<input type="password" value="....."/>	
Technician code:	<input type="text" value="000000007"/>	
Country:*	<input type="text" value="Japan"/>	
Company name:*	<input type="text" value="konicaminolta"/>	
Company code:	<input type="text"/>	
Service office name:	<input type="text"/>	
Service office code:	<input type="text"/>	

[Generate a password.](#)

Generated password:


1. Enter "Technician name."
Use 1 to 64 characters regardless of whether one-byte or two byte.
2. Enter "Password" and "Password (confirmation)."
Use one-byte alphanumeric characters and symbols for password.
3. Enter "Country."
Use 1 to 128 characters regardless of whether one-byte or two byte.
4. Enter "Company name."
Use 1 to 256 characters regardless of whether one-byte or two byte.
5. Enter the following items if necessary.
 - Enter "Technician code." Use 0 to 32 one-byte alphanumeric characters and symbols.
 - Enter "Company code." Use 0 to 32 one-byte alphanumeric characters and symbols.
 - Enter "Service office name." Use 0 to 256 characters regardless of whether one-byte or two byte.
 - Enter "Service office code." Use 0 to 32 one-byte alphanumeric characters and symbols.
 - "Generate a password"
By clicking "Generate a password", a password is generated automatically.
Click "Set password" to set the password automatically generated to the "Password" and "Password (confirmation)." Click "Copy" to copy the password automatically generated to the clipboard.
6. Click [Register].
The entered technician information is registered and the next technician information can be registered.

Note

- **Registration No. is determined automatically.**

(c) Edit

Edit a registered technician information.

RegisterTech>List>Edit


Registration No.	<input style="width: 90%;" type="text" value="001"/>	(* Must item)
Technician name:*	<input style="width: 95%;" type="text" value="Aaaa Bbbb"/>	
Technician code:	<input style="width: 95%;" type="text" value="000000001"/>	
Country:*	<input style="width: 95%;" type="text" value="Japan"/>	
Company name:*	<input style="width: 95%;" type="text" value="konicaminolta"/>	
Company code:	<input style="width: 95%;" type="text"/>	
Service office name:	<input style="width: 95%;" type="text"/>	
Service office code:	<input style="width: 95%;" type="text"/>	

1. Edit the items to be changed.

- Edit "Technician name." Use 1 to 64 characters regardless of whether one-byte or two byte.
- Edit "Technician code." Use 0 to 32 one-byte alphanumeric characters and symbols.
- Edit "Country." Use 1 to 128 characters regardless of whether one-byte or two byte.
- Edit "Company." Use 1 to 256 characters regardless of whether one-byte or two byte.
- Edit "Company code." Use 0 to 32 one-byte alphanumeric characters and symbols.
- Edit "Service office name." Use 0 to 256 characters regardless of whether one-byte or two byte.
- Edit "Service office code." Use 0 to 32 one-byte alphanumeric characters and symbols.

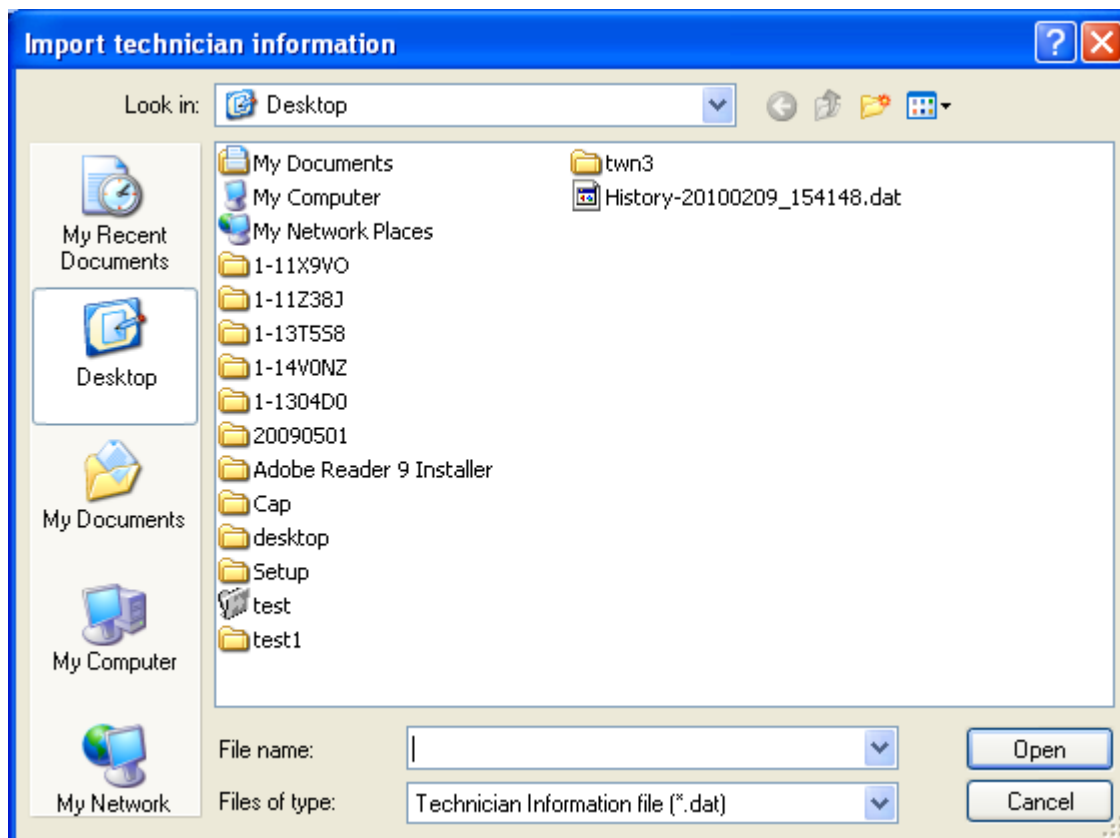
2. Click [OK].

The edited result is reflected to the technician information.

(d) Import

Import the technician information which is exported from Management Tool.

1. Specify the storage location of the technician information file to import.



2. Click [Open].
The technician information file is imported.

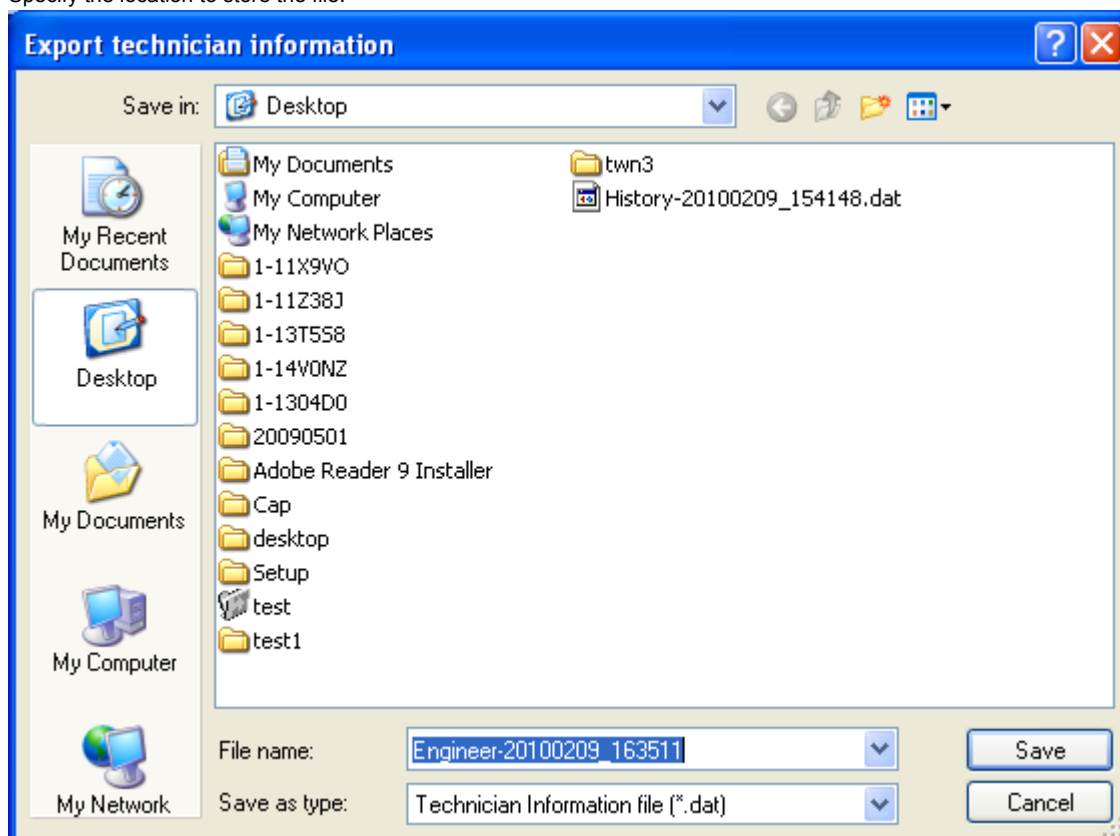
Note

- The technician information already exists is not imported.

(e) Export

Export the technician information collectively.

1. Specify the location to store the file.



2. Click [Save].

The export of the technician information starts.

Note

- The file format "Technician Information file" is a format to display the contents on the Management Tool. When the file is stored in other format, the file is unable to open on the Management Tool.

(3) Administrator Setting

Change the administrator password.

Admin.setting>PW change

Current password:

New password:

New password (confirmation):

OK Cancel

1. Enter the current password and the new password.

2. Click [OK].

The new Password is set.

Note

- Use one-byte alphanumeric characters and symbols for password.

1.8.6 Various setting for the software

(1) File menu

(a) Import

- Work log
Select "Work log" from "Import" in the "File" menu to load the work log which has been exported with the Management Tool. (Refer to [E.1.8.4.\(3\).\(c\) Import](#))

Note

- It is available only from the top screen or the Work log screen.

- User information
Select "User information" from "Import" in the "File" menu to load the user information which has been exported with the Management Tool. (Refer to [E.1.8.4.\(4\).\(d\) Import](#))

Note

- It is available only from the top screen or the Register user screen.

- Technician information
Select "Technician information" from "Import" in the "File" menu to load the technician information which has been exported with the Management Tool. (Refer to [E.1.8.5.\(2\).\(d\) Import](#))

Note

- This menu is displayed when logging in as an administrator.
- It is available only from the top screen or the Technician information screen.

(b) Export

- Work log
Select "Work log" from "Export" in the "File" menu to store the collective work log as a file. (Refer to [E.1.8.4.\(3\).\(d\) Export](#))
Note
 - It is available only from the top screen or the Work log screen.
- User information
Select "User information" from "Export" in the "File" menu to store the collective user information as a file. (Refer to [E.1.8.4.\(4\).\(e\) Export](#))
Note
 - It is available only from the top screen or the Register user screen.
- Technician information
Select "Technician information" from "Export" in the "File" menu to store the collective user information as a file. (Refer to [E.1.8.5.\(2\).\(e\) Export](#))
Note
 - This menu is displayed when logging in as an administrator.
 - It is available only from the top screen or the Register technician screen.

(2) Tool menu

The functions in "Tool" are available only from the top screen.

(a) Replacement work

Select "Replacement work" in "Tool" menu to perform unit parts replacement. (Refer to [E.1.8.4.\(2\) Replacement work](#))

Note

- This menu is displayed when logging in to the technician mode.

(b) Work log

Select "Work log" from "Tool" to check the work log. (Refer to [E.1.8.4.\(3\) Work log](#))

(c) Register user

Select "Register user" in "Tool" menu to check, register, edit, or delete user information. (Refer to [E.1.8.4.\(4\) Register user](#))

(d) SetPersonal

Select "Set personal info" in "Tool" menu to change the password of login technician or edit comments. (Refer to [E.1.8.4.\(5\) SetPersonal](#))

Note

- This menu is displayed when logging in to the technician mode.

(e) Unit Serial Number Setting

Select "Unit Serial Number" from "Tool" menu to write the unit serial number in the RFID tag. (Refer to [E.1.8.4.\(6\) Serial number setting \(bizhub PRESS C8000\)](#))

Note

- This menu is displayed when logging in to the technician mode.

(f) Intermediate transfer steering sensor information setting

The default value of the intermediate transfer steering sensor can be written in the RFI tag by selecting "Intermediate transfer steering sensor information setting" from "Tool" menu. (Refer to [E.1.8.4.\(7\) Intermediate transfer steering sensor information setting \(bizhub PRESS C8000\)](#))

Note

- This menu is displayed when logging in to the technician mode.

(g) Option

Each item of Management Tool can be set by selecting "Option" from "Tool" menu. (Refer to [E.1.8.4.\(8\) Option](#))

Note

- This menu is displayed when logging in to the technician mode.

(h) Register technician

Select "Register technician" in "Tool" menu to check, register, edit, or delete technician information. (Refer to [E.1.8.5.\(2\) Register technician](#))

Note

- This menu is displayed when logging in as an administrator.

(i) Administrator Setting

Select "Administrator Setting" in "Tool" menu to change the password of administrator. (Refer to [E.1.8.5.\(3\) Administrator Setting](#))

Note

- This menu is displayed when logging in as an administrator.

(3) Help menu**(a) Version**

Select "Version" in the "Help" menu to display version information of the Management Tool.

Note

- The image at the top of the screen can be customized. (Refer to [E.1.8.6.\(4\) Image setting](#))

(4) Image setting**(a) Navigation**

"70 x 40 (pixels)" image display area of is provided in the navigation view area. An image to be displayed here can be customized by users.



Item	Description
Supported file type	GIF, JPG, JPEG, BMP, PNG
Image size	Image size is arbitrary. *1
Display method	Custom image to be displayed is enlarged or reduced to the area size (70 x 40).
File Name	Navigation. (extension *2)
Stored location	(Install directory)\Images
Remark	When a file exists, a custom image is displayed. *3

*1 70 x 40 (pixels) size is recommended.

*2 For extension, refer to "Supported file type."

When a file does not exist, a default image shown above is displayed.

(b) Log in screen

"480 x 90 (pixels)" image display area of is provided on the login screen.

An image to be displayed here can be customized by users.



Item	Description
Supported file type	GIF, JPG, JPEG, BMP, PNG
Image size	Image size is arbitrary. *1
Display method	Custom image to be displayed is enlarged or reduced to the area size (480 x 90).
File Name	Login.(extension *2)
Stored location	(Install directory)\Images
Remark	When a file exists, a custom image is displayed. *3

*1 480 x 90 (pixels) size is recommended.

*2 For extension, refer to "Supported file type."

When a file does not exist, a default image shown above is displayed.

(c) Top screen

"350 x 365 (pixels)*1" image display area of is provided on the login screen (when the main window size is 800 x 600 *2). An image to be displayed here can be customized by users.



Item	Description
Supported file type	GIF, JPG, JPEG, BMP, PNG
Image size	Image size is arbitrary. *1
Display method	Custom image to be displayed is enlarged or reduced to the area size (350 x 365).
File Name	TopMenu.(extension*3)
Stored location	(Install directory)\Images
Remark	When a file exists, a custom image is displayed. *4

*1 350 x 365 (pixels) size is recommended.

*2 Image size (350 x 365) is default value. The image is displayed by enlarged or reduced in accordance with the window size.

*3 For extension, refer to "Supported file type."

When a file does not exist, a default image shown above is displayed.

(d) Version information screen

"460 x 150 (pixels)" image display area of is provided on the version information screen.

An image to be displayed here can be customized by users.



Management Tool

Item	Description
Supported file type	GIF, JPG, JPEG, BMP, PNG
Image size	Image size is arbitrary. *1

Display method	Custom image to be displayed is enlarged or reduced to the area size (460 x 150).
File Name	Version.(extension*2)
Stored location	(Install directory)\Images
Remark	When a file exists, a custom image is displayed. *3

*1 460 x 150 (pixels) size is recommended.

*2 For extension, refer to "Supported file type."

When a file does not exist, a default image shown above is displayed.

(5) Set list view

The items to be displayed and the display width can be changed.

1. Click [Set list view].

2. The set list view screen is displayed.

The items to be displayed differs among screens.

The figure below is the work log set list view screen.

WorkLog>List>Set view

List:

- ☒ Unit type
- ☒ Unit serial number
- ☒ Times of replacement
- ☒ Unit removal date
- ☒ Count read date
- ☒ Count reset date
- ☒ The last undo reset date
- ☒ Model name
- ☐ Machine serial number
- ☒ Technician name
- ☐ Technician code
- ☐ Country name (technician)
- ☐ Company name (technician)
- ☐ Company code (technician)
- ☐ Service office name (technician)
- ☐ Service office code (technician)
- ☒ User name
- ☒ Type of business (user)
- ☐ User code
- ☐ User ID
- ☐ User office location name (user)
- ☐ User office location code (user)

Up

Down

Show

Hyde

Row width(pixel): 119

☐ Show the history of the complete work

OK Cancel

3. Set show/hide of items by checking in the list.

- Items with check are displayed.

- The setting can be changed by clicking [Show]/[Hide] on the right of the screen.

4. Set other conditions if necessary.

- Selected column width: Specify the display width by entering desired value. It can be specified by 0 to 999.

- [Top] :Item display order is moved to top.

- [Bottom] :Item display order is moved to bottom.

5. Click [OK].

The set list view is updated.

(6) Export CSV

The format of the CSV file exported by the Management Tool is as follows.

Output items

Common information (Replacement work information)		
No	Item	Description
1	User name	The user name associated to replacement work is exported.
2	Type of business (user)	The type of business associated to replacement work is exported.
3	User code	The user code associated to replacement work is exported.
4	User ID	The user ID associated to replacement work is exported.

5	User office location name (user)	The user office location name associated to replacement work is exported.
6	User office location code (user)	The user office location code associated to replacement work is exported.
7	Contact person name (user)	The contact person name associated to replacement work is exported.
8	Contact person ID no. (user)	The contact person ID no. associated to replacement work is exported.
9	Contact telephone (user)	The contact telephone associated to replacement work is exported.
10	Technician name	The name of the technician who performed replacement work is exported.
11	Technician code	The code of the technician who performed replacement work is exported.
12	Country (technician)	The country of the technician who performed replacement work is exported.
13	Company name (technician)	The company name of the technician who performed replacement work is exported.
14	Company code (technician)	The company code of the technician who performed replacement work is exported.
15	Service office name (technician)	The service office name of the technician who performed replacement work is exported.
16	Service office code (technician)	The service office code of the technician who performed replacement work is exported.
17	Machine name	Export the device name.
18	Main Body Serial Number	The serial number of the main body is exported.
19	Unit type	The unit type is exported.
20	Unit Serial Number	The serial number of the unit is exported.
21	Replacement Count	The number of times of unit replacement is exported.
22	Unit removal date	The date of unit removal is exported.
23	Count read date	The date when the unit RFID tag is read is exported.
24	Count reset date	The date when the count is reset is exported.
25	The last undo reset date	The last date when undoing reset is exported.
26	Number of parts	The number of parts in the unit is exported.
Part Information (for each part)		
27	No	Assigned from 1 automatically.
28	Replace	The replaced parts are outputted as "Changed."
29	Parts name	The parts name is exported.
30	Parts No.	The parts number is exported.
31	Quantity	The quantity of parts is exported.
32	Count	The count value of parts is exported.
33	Life cycle	The life cycle value of parts is exported.
34	Supplement 1	When the unit type is "intermediate transfer unit" and the parts is "intermediate transfer belt" with count reset, "intermediate transfer belt characteristic value (front)" is exported.
35	Supplement 2	When the unit type is "intermediate transfer unit" and the parts is "intermediate transfer belt" with count reset, "intermediate transfer belt characteristic value (rear)" is exported.

Note

- Break character is "," (comma).
- Each item is enclosed in " " (double quotation marks).
- When no data exist, only " " (double quotation marks) is outputted.

File format

The header (item name) is created on first row of the file.

For the subsequent rows, each parts information is outputted per one line.

For example, when the unit has 15 parts in it, 15 rows are outputted per replacement work.

1st row	Header row (exports the item name)	N of replaced parts per replacement work
2nd row	Replacement work 1 - part (1)	
3rd row	Replacement work 2 - part (2)	
4th row	Replacement work 3 - part (3)	
5th row	Replacement work 4 - part (4)	
	▪ ▪ ▪	

(7) Print Report

Details on the replacement work can be printed as replacement report.

Print layout

Unit replacement slip

Unit information

Name : Fusing
 Serial Number : A1RFA72AF9999991
 Times of replacement : 0
 Unit removal date : -
 Count read date: : 2/9/2010 11:57:36 AM
 Count reset date : -

Machine information

Serial Number :

Technician information

Country : Japan
 Company name : konicaminolta
 Name : Aaaa Bbbb

User information

User name :
 Type of business :
 User office location :
 name
 Contact person :
 name
 Contact telephone :

Software information

Software : KONICA MINOLTA Management Tool
 Version : 1.0.00000 0001

Part Information

No.	Replacement	Part name	Part No.	Q'ty	Life cycle	
1		Fusing Web Unit	A1RFB775	1	0	0%
2		Fusing Out Heat Assembly	A1RFB785	1	0	0%
3		Fusing Oscillating Axis Assembly	A1RFA752	1	0	0%
4		Fusing Paper Exit Guide Assembly	A1RFA773	1	0	0%
5		Fusing Under Belt Unit	A1RFA780	1	0	0%
6		Fusing Roller Assembly	A1RFA800	1	0	0%
7		Fusing Separation Claw Unit	A1RFA774	1	0	0%
8		Fusing Web Torque Limiter	A1RF7239	1	0	0%
9		Fusing Web Prevention Part	A1RF7240	1	0	0%
10		Fusing Paper Exit Roller(Low)	A1RF7517	1	0	0%
11		Fusing Refresh Roller Assembly	A1RFB754	1	0	0%
12		Fusing Drive Assembly	A1RFA755	1	0	0%
13		Fusing Temp. Sensor(Out Heat)	A1RFB793	1	0	0%
14		Fusing Temp. Sensor(U-Belt)	A1RFA751	1	0	0%
15		Fusing Temp. Sensor(Fus.Roller)	A1RFB750	1	0	0%
16		Fusing Heater/1	A1RFM31A	1	0	0%
17		Fusing Heater/4	A1RFM34A	1	0	0%
18		Fusing Heater/5	A1RFM35A	1	0	0%
19		Fusing Paper Exit Actuator Ass.	A1RFA776	1	0	0%
20		Fusing Web Motor Assembly	A1RFB753	1	0	0%

Print date 09/02/2010

1.8.7 Error message list

An error message may appear while Management Tool is operating.
 The description of error and its error code are displayed.



The error codes and countermeasures are shown below. Follow the countermeasures shown below.

Error code	Countermeasures
400-402, 500, 501, 600, 700, 2005-2008, 2030-2044, 2100-2109, 2130-2140, 2151-2160, 2170-2187, 2194-2196, 2200-2209, 2230-2240, 2251-2260, 2270-2280, 2290-2297, 2303-2329, 2331-2343, 2346-2358, 2362, 2363, 2367, 2405, 2409, 2411, 2500-2509, 2516, 2517, 2520-2523, 2762-2766, 2781-2798, 3000-3006, 3008-3014, 3100, 3101	Retry.
2402, 2403, 2410, 2411, 5001-5010, 5200-5208	Check the RFID tag and retry. Note <ul style="list-style-type: none"> • When the same error occurs even after retrying, remove the RFID tag reader/writer from a computer once and insert it again, then reboot the Management Tool. • When the same error still occurs, contact an administrator.
2400, 2406-2408, 5100-5106	Check whether the RFID tag reader/writer is connected to a computer correctly.
102, 111-113, 800-802, 854, 855, 860-868, 880-884, 2090-2096, 2600-2611, 2622-2633, 2636-2644, 2710-2720, 3000-3006	Reinstall the Management Tool.
2100-2121, 2151-2160, 2170-2180, 2200-2221, 2251-2260, 2270-2280, 2303-2319, 2322-2329, 2331-2345, 2359, 2731, 2760, 2761	The file is not supported.
100	Non-compliant OS is used.
803-808, 914, 915, 950, 951, 2401, 2404, 2721-2723, 2730, 2732-2759, 2767-2775, 5102, 5201	Reboot the Management Tool.
2510-2515	Check the printing environment.



KONICA MINOLTA

© 2010 KONICA MINOLTA BUSINESS TECHNOLOGIES, INC.

Use of this manual should be strictly supervised to avoid disclosure of confidential information.

CCA1DU-M-E1-0000